

solaris semi-automatic inverter welder

# MULTIMIG-245

*Your personal welding expert*



art. SL5712-3

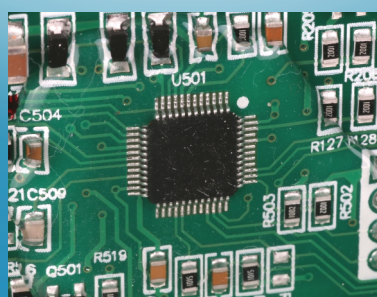
# 5

WELDING  
MODES

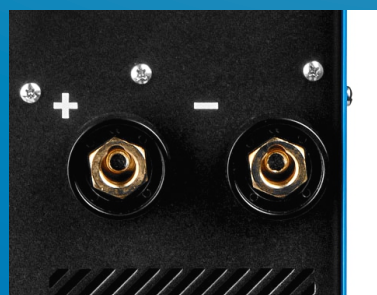
**MIG · SPOT MIG · FLUX · MMA · LIFT TIG · SYNERGIC MODE**



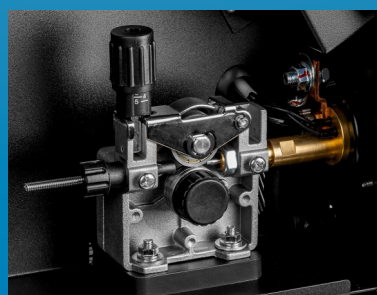
Extended set of functions  
and modes



Microprocessor



Welding connectors 13 mm  
and polarity switching  
(for gasless welding)



Metal wire feed mechanism



Power input 230 V~, 50 Hz — No-load voltage 80 V — Welding current range: MIG 30–240 A, MMA 30–200 A, TIG 20–240 A — Duty cycle at max current at 20 °C 60 % — Power consumption at max current 4.9 kW — Max power 8.3 kW — MIG wire diameter 0.6–1.0 mm — MMA electrodes diameter 1.6–5.0 mm — TIG electrodes diameter 0.5–3.2 mm

# solaris



## MULTIMIG-245

allows operation  
in various welding modes



**MIG / MAG**

**Semi-automatic welding with various types of welding wire in shielding gas.**



**SYNERGIC  
MODE**

**The synergic mode allows to more accurately setting the machine.**

Set the wire diameter and material type. The setting range is adapted to the specified parameters.



**SPOT**

**MIG/MAG welding mode with spot welding time setting.**

This mode is useful for multiple identical spot welds, or spot welding of thin metals that overheat and/or lose form easily.



**FLUX**

**Flux-cored wire semi-automatic welding mode without shielding gas.**



**MMA**

**The good old manual arc welding with a covered electrode.**

«Hot Start» and «Arc force» adjustments are available.



**LIFT TIG**

**Tungsten electrode inert gas welding with lift start.**

The valve type TIG torch is available as an optional accessory.

Synergic programs for semi-automatic welding allow you to select: type of material being welded, shielding gas type, wire diameter, metal thickness. The machine will automatically adjust all required parameters.

- 1** Rotate: Adjusts welding current (MMA), wire feeding speed (MIG) or allows to navigate advanced settings.  
Press in MIG mode: Starts wire feeding.
- 2** Rotate: Adjusts welding voltage (MIG), sets parameters of advanced settings, or sets SPOT TIME.  
Press in MIG mode: Checks gas flow.
- 3** Rotate: Adjust Inductance (MIG) or Hot Start (MMA).
- MODE** Short press: Selects welding mode MMA / TIG LIFT / MIG.  
Long press (>2 s) in MIG mode: enters advanced settings menu Pre Gas, Start WFS, Burn Back, Post gas.
- ↑↓** Short press: Selects trigger operating setting (2T/4T/SPOT) for MIG mode.  
Long press (>2 s) while in SPOT position: Enters the SPOT TIME setting menu.
- Ø** Selects wire diameter in MIG mode.
- I** Selects material or gas type in MIG mode.





# solaris

# MULTIMIG-245

## FUNCTIONS AND SETTINGS



arc inductance changes the weld depth and the shape of the weld bead



wire is annealed when welding stops



«Hot start» for better electrode ignition



can weld with long or short welding joints



Gas pre-flow and post-flow time adjustment

Start WFS — slow start function reduces initial wire speed for precise electrode positioning

Gas test mode

Wire feed test mode



MIG spot welding mode  
(0.1 to 10 seconds)



# solaris

# MULTIMIG-245

## TECHNICAL ADVANTAGES

Modern architecture ensures stable operation  
and device reliability

2 displays and additional  
setting indicators –  
ultimate setup convenience  
and operational control



Metal wire feed  
mechanism

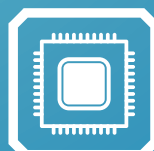
EURO connector –  
universal compatibility  
with all standard  
MIG torches

Polarity reversal  
for welding  
without gas (FLUX)

Heavy-duty power  
terminals 35–50 (13 mm)  
engineered for extreme  
loads



SMART COOLING function –  
Intelligent fan control for low  
noise and to reduce dust



microprocessor  
control

# solaris

# MULTIMIG-245



## EQUIPMENT

- 1** Welding torch 3 meters
- 2** Electrode holder with cable 3 meters
- 3** Earth clamp with cable 3 meters
- 4** Gas hose 2 meters
- 5** Feed roller (V-type) for 0.6-0.8 mm steel wire (pre-installed in mechanism)
- 6** Feed roller (K-type) for 0.8-1.0 mm FLUX-cored wire
- 7** Replacement contact tip set 0.6 mm (3 pcs); 0.8 mm (5 pcs); 1.0 mm (5 pcs)
- 8** Welding torch service wrench

## TECHNICAL DATA

Power input **230 V~, 50 Hz**

No-load voltage **80 V**

Welding current range: MIG **30–240 A**, MMA **30–200 A**, TIG **20–240 A**

Duty cycle at max current at 20 °C **60 %**

Power consumption at max current **4.9 kW**

Max power **8.3 kW**

MIG wire diameter **0.6–1.0 mm**

MMA electrodes diameter **1.6–5.0 mm**

TIG electrodes diameter **0.5–3.2 mm**