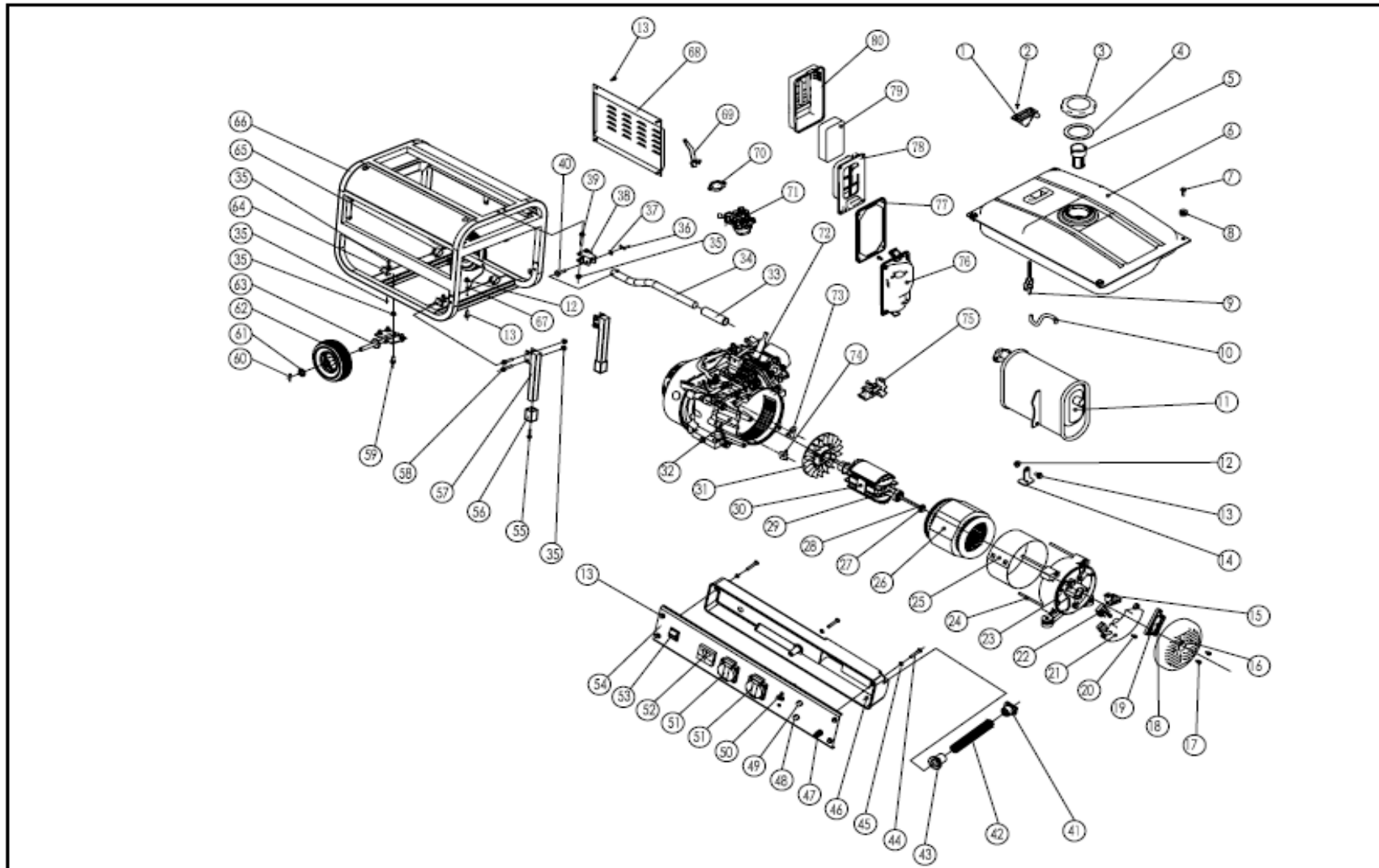


 **Model ESE 2000 BS**



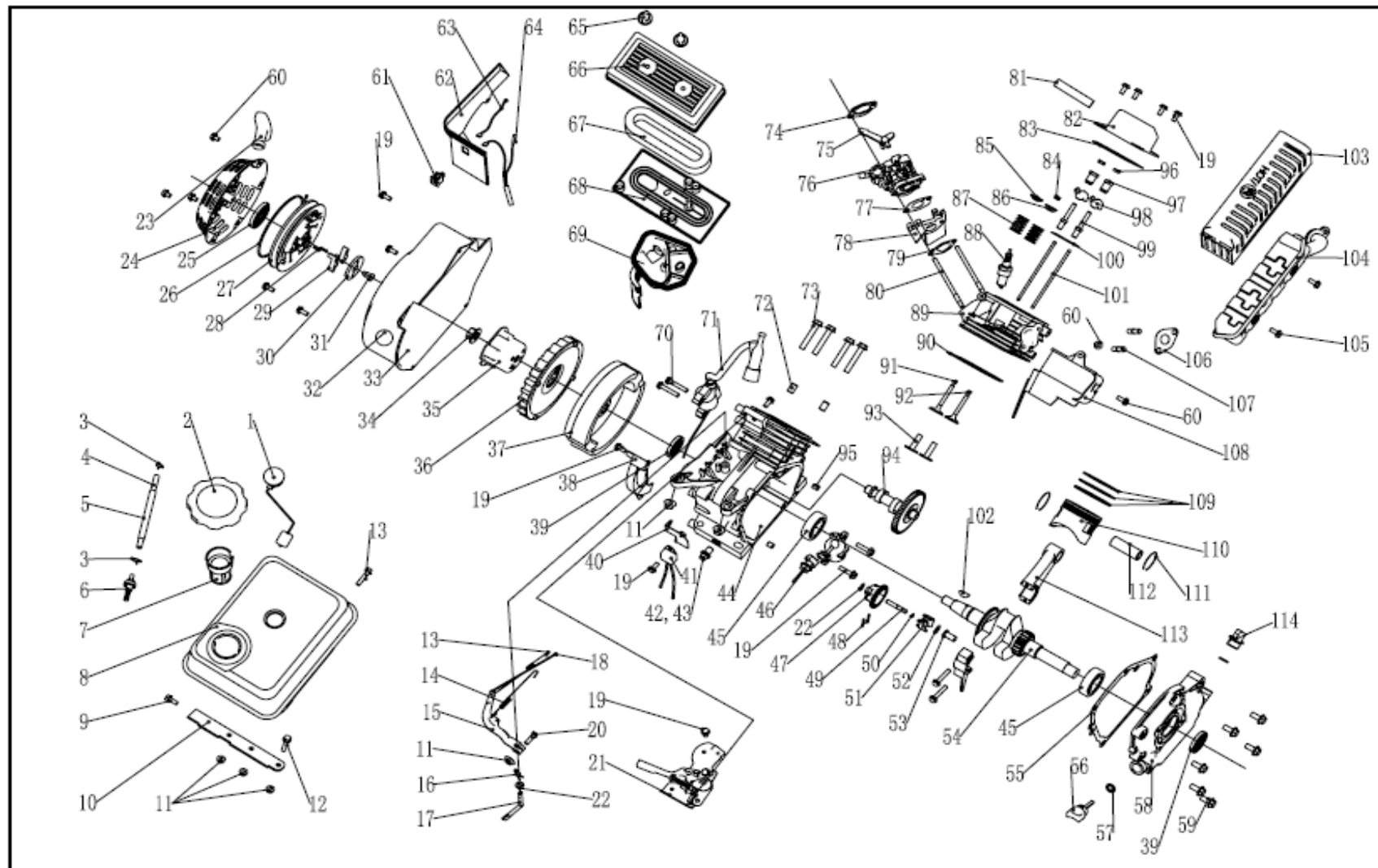
File No.: SQC 200509/001

POS	Art. Nr	Bezeichnung
1	SF168FD-1160100	Fuel meter
2	GB819-85	Screw M5X6
3	SF168FD-1160200	Fuel tank cap
4	SF168FD-1160200	Fuel tank cap seal
5	SF168F-1160500	Fuel filter
6	SF168FD-1160001A	Fuel tank
7	GB5789-86	Screw M6X16
8	SF168FD-1163000	Tank rubber bush
9	SF168FD-1160400	Fuel cock
10	SF168FD-1160002A	Fuel hose
11	SF168FD-1100200	Muffler
12	GB6177-86	Nut M6
13	GB5789-86	Screw
14	SF168FD-1100002B	Muffler supporter
15	SF02FD-1152035	Brush assy
16	SF02FD-1152002	Alternator end cover
17	GB5789-86	Screw M5X10
18	GB5781-87	Screw M5×16
19	SF168FD-1150230	Terminal
20	GB5781-86	Screw M5×15
21	SF168FD-1152031	AVR
22	SF168FD-1152004	Diode assy
23	SF02FD-1152032	Alternator rear cover
24	GB5789-86	Flange bolt M6×130
25	SF02FD-1152001	Stator cover
26	SF02FD-1152020	Stator
27	GB5780-86	Rotor screw M8×202
28	GB90-85	Washer
29	GB279-88 6202	Bearing
30	SF02FD-1152010	Rotor
31	SF02FD-1152009	Cooling fan
32	SF168FD-1030007	Crankcase cover
33	SF188FD-1741002-C	Handle sleeve
34	SF168FD-1151102G	Handle

POS	Art. Nr	Bezeichnung
35	GB6177-86	Nut M8
36	SF188F-1110007	Clip
37	SF188F-1110005	Washer
38	SF168FD-1151103G	Handle connector
39	GB5789-86	Screw M8×45
40	SF168FD-1151104G	Pin
41	SF02FD-1151201-C	Wiring rubber bush
42	SF02FD-1151209-C	Wiring protecting hose
43	SF02FD-1151208-B	Wiring rubber bush
44	GB822-88	Screw M5×35
45	GB97.1-85	Washer Φ5
46	SF02FD-1151206E	Control box
47	GB5781-86	Screw M6×22
48	SF02FD-1151207B	Oil alarm indicator
49	SF02FD-1151201A	AC indicator
50	SF02FD-1151202	AC circuit breaker
51	SF02FD-1151203	Receptacle
52	SF02FD-1151204A	Voltmeter
53	SF02FD-1151205A	Engine switch
54	SF02FD-1151200-14	Control panel
55	GB5789-86	Bolt M6×29
56	SF168FD-1151106G	Vibration absorber
57	SF168FD-1151105G	Supporter
58	GB5789-86	Screw M8×40
59	GB5789-86	Screw M8×20
60	GB/T91-2000	Cotter Pin
61	GB97.1-85 φ14	Flat washer
62	SF168FD-1151109G	Wheel
63	SF168FD-1151108G	Wheel shaft
64	SF02FD-1151300A	Vibration absorber I
65	SF02FD-1151300B	Vibration absorber II
66	SF168FD-1151101G	Frame
67	SF168FD-11511013G	Lead wire
68	SF02FD-1151002	Muffler cover

<b>POS</b>	<b>Art. Nr</b>	<b>Bezeichnung</b>
69	SF02FD-1151201A	Choke lever
70	SF168FD-1130005	Gasket
71	SF168FD-1130003	Carburetor
72	SF168F-1000000	Engine
73	SF02FD-1201100B	Plug I
74	SF02FD-1201100A	Plug II
75	SF168FD-1111100	Control assy
76	SF168FD-1090100	Air cleaner base
77	SF168FD-1090002	Air cleaner seal
78	SF168FD-1090003	Separating plate
79	SF168FD-1090004	Element
80	SF168FD-1090200	Air cleaner cover

**Engine Model SFE160**



File No:SQCC200503/072

POS	Art. Nr	Bezeichnung
1	SF168F--1070100-C	Fuel meter
2	SF160F--1070100	Fuel tank cap
3	SF160F--1070001	Fuel hose clip
4	SF168F--1070002-C	Fuel hose
5	SF168F--1070003	Fuel hose protector
6	SF160F--1070300	Fuel hose connector
7	SF160F-1070006	Fuel filter
8	SF168F--1070200-C	Fuel tank
9	GB5789-86	Screw M 6 x 15
10	SF168F--1070003-C	Fuel tank support
11	GB6177-86	Nut M6
12	GB5789-86	Screw M 6 x 29
13	SF168F--1110005	Carburetor spring
14	SF168F--1110007	Governing spring
15	SF160F--1110003	Governing lever
16	SF160F--1110008	Cotter pin
17	SF160F--1110001	Governing shaft
18	SF168F--1110006	Carburetor connector
19	GB5789--86	Screw M6 x 12
20	SF160F--1110004	Governing lever tightening screw
21	SF168F--1111000	Throttle controller
22	SF160F--1110108	Governing gear washer
23	SF160F--1061006	Handle
24	SF168F--1061100-C	Recoil starter case
25	SF160F--1061005	Recoil starter sprial spring
26	SF160F--1061009	Rope
27	SF160F--1061001	Drum sheave
28	SF160F--1061004	Pawl spring
29	SF160F--1061002	Pawl
30	SF160F--1061007	Pawl guide
31	SF160F--1061008	Pawl guide setting screw
32	139FMD-1009301	Plug
33	SF168F--1080100	Fan case
34	SF160F--1050010	Flywheel nut
35	SF160F--1060001	Starting hub
36	SF168F--1080001	Fan
37	SF168F--1120100	Flywheel
38	SF168F--1080200	Air shroud
39	SF168F--1030100	Oil seal

POS	Art. Nr	Bezeichnung
38	SF168F--1080200	Air shroud
39	SF168F--1030100	Oil seal
40	SF160F-1080300	Diode supporter
41	SF160F-1126000	Oil alert diode
42	SF160F--1030003	Oil draining plug
43	SF160F--1030004	Plug washer
44	SF168F--1030012	Crankcase
45	GB/T—276--94	Bearing
46	SF160F-1127000	Oil alert sensor
47	SF160F--1110101	Governing gear
48	SF160F--1110102	Flyweight pin
49	SF160F--1110104	Governing gear shaft
50	SF160F--1110103	Governing gear shaft clip
51	SF160F--1110107	Flyweight
52	SF160F--1110106	Washer
53	SF160F--1110105	Collar
54	SF168F--1050001	Crankshaft
55	SF168F--1030008	Crankcase gasket
56	SF160F--1030001	Oil gauge
57	SF160F--1030002	Oil gauge washer
58	SF168F--1030007	Crankcase cover
59	GB5789--86	Screw M8 x 32
60	GB5789--86	Screw M 6 x 8
61	SF168F--1121100-C	Engine switch
62	SF168F--1121001-C	Plastic panel
63	SF168F--1125000-C	Wire
64	SF168FD--1125000-C	Stop wiring
65	SF168F--1090100-C	Air cleaner cover tightening nu
66	SF168F--1090200-C	Air cleaner cover
67	SF168F--1090001-C	Element
68	SF168F--1090300-C	Air cleaner base
69	SF168F--1090500-C	Air cleaner supporter
70	GB5789--86	Screw
71	SF168F-1123000-C	T.C.I.
72	152FMD--1001007	Dowel pin
73	GB5789--86	Cylinder head tightening bolt
74	SF160F--1130004	Air cleaner gasket
75	SF168F--1130100	Choke lever
76	SF168F--1130005	Carburetor

POS	Art. Nr	Bezeichnung
77	SF160F--1130003	Carburetor gasket
78	SF168F--1130001	Heating insulator
79	SF168F--1130002	Insulator gasket
80	SF160F--1010001	Intake bolt
81	SF160F--1020001	Breather hose
82	SF160F--1020100	Cylinder head cover
83	SF160F--1020002	Cylinder head cover gasket
84	SF160F--1040008	Exhaust valve collar
85	SF160F--1040001	Intake valve retainer
86	SF160F--1040007	Exhaust valve retainer
87	SF160F--1040003	Valve spring
88	SF168F--1124000	Spark plug
89	SF168F--1010100	Cylinder assy.
90	SF160F--1030009	Cylinder gasket
91	SF168F--1040002	Intake valve
92	SF168F--1040006	Exhaust valve
93	SF160F--1040013	Tapet
94	SF168F--1041000	Camshaft
95	139FMD--1003003	Dowel pin
96	SF160F--1040011	Tighting nut
97	SF160F--1040012	Valve clearance adjusting nut
98	SF160F--1040009	Rocker arm
99	SF160F--1040010	Rocker arm bolt
100	SF168F--1040004	Push rod guide
101	SF168F--1040005	Push rod
102	GB1099--79	Key
103	SF168F--1100100-C	Muffler protector
104	SF168F--1101100-C	Muffler
105	GB9074.1-88	Screw M6 x 10
106	SF160F-1100001	Exhaust gasket
107	GB900--88	Exhaust bolt
108	SF168F--1080002	Air shroud
109	SF168F--1050007	Piston rings
	SF168F--1050006	
	SF168F--1050200	
110	SF168F--1050005	Piston
111	SF168F--1050004	Piston pin clip
112	SF168F--1050003	Piston pin

POS	Art. Nr	Bezeichnung
113	SF168F--1050100	Connecting rod
114	SF160F--1030005	Oil plug