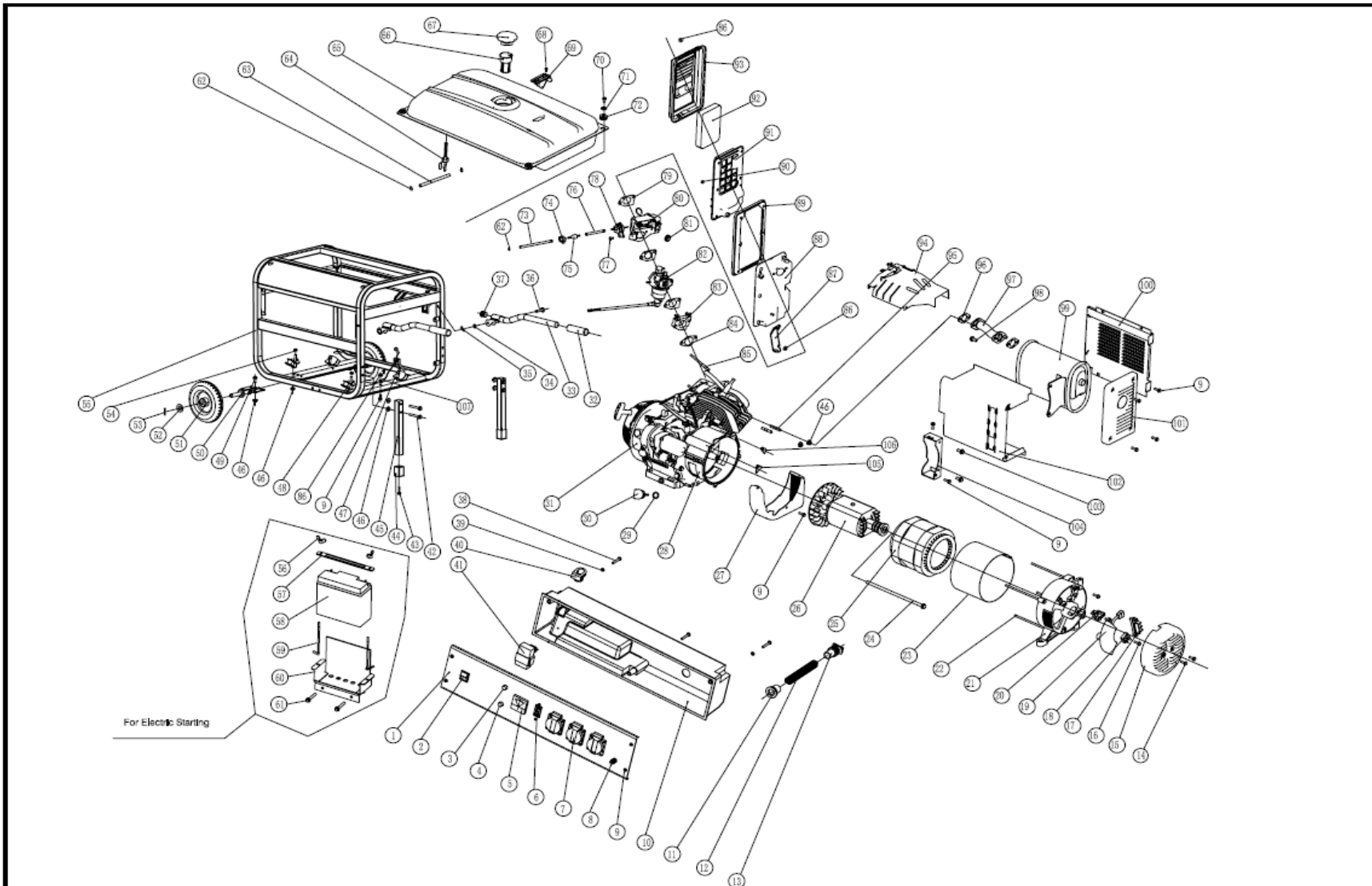


# Model ESE 6000 BS



File No.: SQC 200509/003

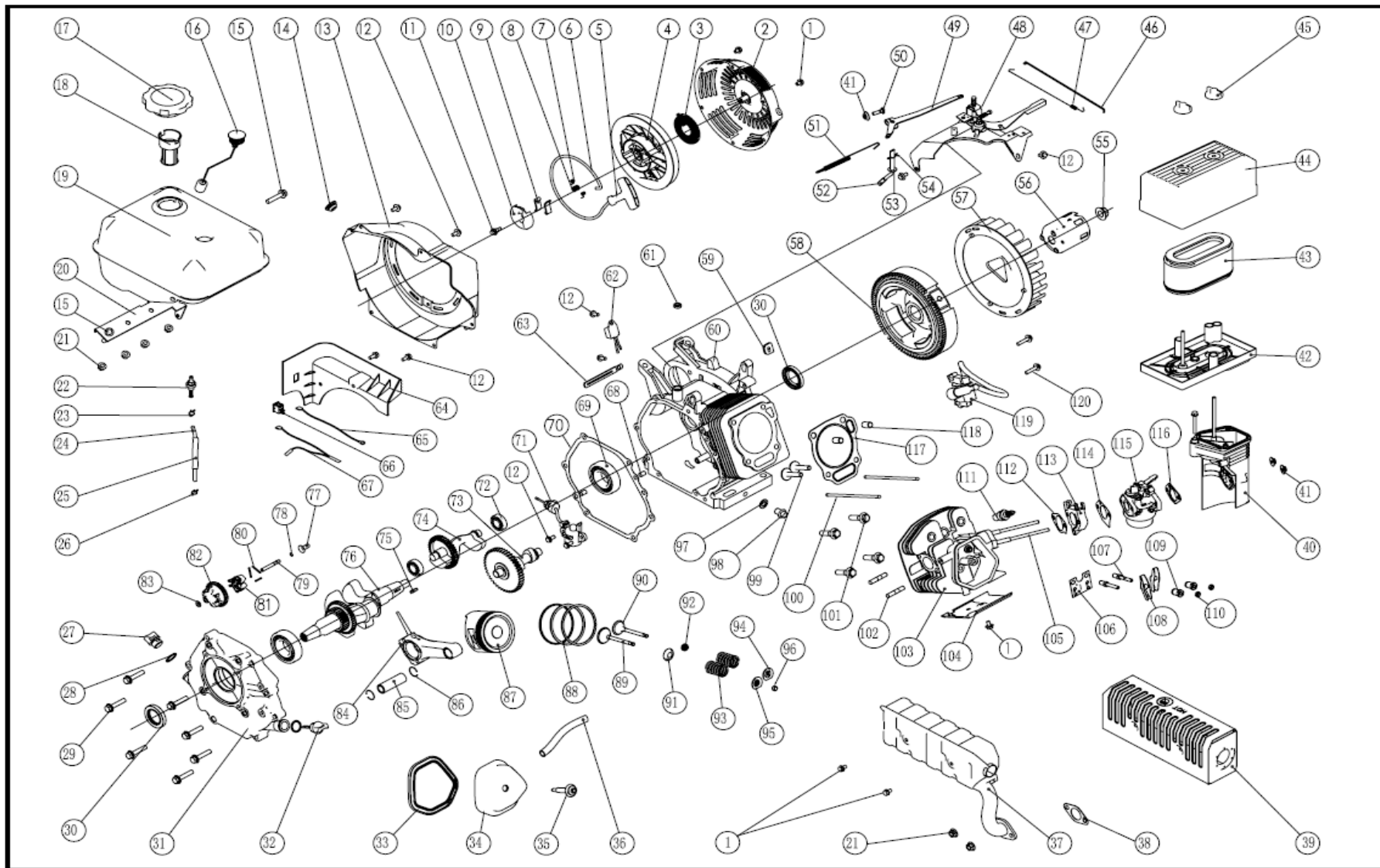
POS	Art. Nr.	Bezeichnung
1	SF188FD-1710000	Control panel
2	SF05FD-1151205	Switch
3	SF02FD-1151201A	AC indicator
4	SF02FD-1151207D	Oil alarm indicator
5	SF02FD-1151204A	Voltmeter
6	SF05FD-1151202	AC circuit breaker
7	SF02FD-1151203	Receptacle
8	GB5781-86	Screw M6×22
9	GB5789-86	Screw
10	SF05FD-1151207A	Control box
11	SF02FD-1151201	Wiring rubber bush
12	SF05FD-1151209C	Wire protecting hose
13	SF05FD-1170003-B	Wiring rubber bush
14	GB5789-86	Screw M5×10
15	SF05FD-1152002	Alternator end cover
16	GB5789-86	Screw M6×10
17	SF168F-1152032	Terminal
18	SF168F-1152004A	Diode
19	SF168F-1152031A	AVR
20	SF02FD-1152035	Brush
21	SF05FD-1152032	Alternator rear cover
22	GB5789-86	Stator screw M6×164
23	SF05FD-1152001	SFator cover
24	GB5787-88	Rotor screw M10×1.25×250
25	SF05FD-1152020	Stator
26	SF05FD-1152010	Rotor
27	SF05FD-1151600	Alternator air outlet
28	SF188FD-1030011	Crankcase cover
29	SF1P60F-1030004	O-ring
30	SF188F-1030003	Oil gauge

POS	Art. Nr.	Bezeichnung
31	SF188FD-100000	Engine
32	SF188FD-1741002-C	Handle sleeve
33	SF188FD-1151104I	Handle
34	SF188F-1110005	Flat washer
35	SF188F-1110007	Clip
36	SF188FD-1151102I	Pin
37	SF188FD-1151105I	Handle plug
38	GB822-88	Screw M6×40
39	GB97.1-85	Washer Φ6
40	SF05FD-1151206	Plug
41	SF05FD-1719000	Diode
42	GB5789-86	Screw M8×68
43	GB5789-86	Screw M6×29
44	SF168FD-1151104F	Vibration absorber
45	SF188FD-1151103I	Supporter
46	GB6177-86	Nut M8
47	SF05FD-1151300A	Vibration absorber 1
48	SF05FD-1151300B	Vibration absorber 2
49	GB5789-86	Screw M8×20
50	SF188FD-1151106I	Wheel shaft
51	SF168FD-1151107G	Wheel
52	GB97.1-85 φ16	Flat washer
53	GB/T91-2000	Cotter Pin
54	GB6177-86	Nut M10
55	SF188FD-1151101I	Frame
56	GB62-88	Butterfly nut M6
57	SF188FD-1700210-C	Battery fixing plate
58	FM12180	Battery
59	SF188FD-1700203-C	Hook screw M6
60	SF188FD-1700200-C	Battery supporter

POS	Art. Nr.	Bezeichnung
61	GB5789-86	Screw M8×50
62	SF160F-1070001	Clip
63	SF188FD-1160002	Fuel hose
64	SF168FD-1160400	Fuel cock
65	SF188FD-1160001	Fuel tank
66	SF168F-1160500	Fuel filter
67	SF168FD-1160200	Fuel tank cap
68	GB819-85	Screw M5×6
69	SF168FD-1160100	Fuel meter
70	GB5789-86	Screw M6×25
71	GB5287-86	Washer Φ6
72	SF188FD-1160300-C	Rubber bush
73	SF188FD-1131001	Rubber hose
74	SF188FD-1131015	Clip
75	SF188FD-1131100	One way valve
76	SF188FD-1131002	Rubber hose
77	GB818-85	Screw M5×10
78	SF188FD-1031200	Diaphragm governing valve
79	SF188FD-1130002	Gasket
80	SF188FD-1131000	Choke system
81	SF188F-1020001	Rubber bush
82	SF188FD-1133000	Carburetor
83	SF188FD-1134000	Carburetor heating insulator
84	SF188FD-1130003	Gasket
85	SF188FD-1010002	Bolt
86	GB6177-86	Nut M6

POS	Art. Nr.	Bezeichnung
87	SF188FD-1090006	Air cleaner supporter
88	SF188FD-1090100	Air cleaner base
89	SF188FD-1090002	Air cleaner seal
90	GB6177-86	Nut M5
91	SF188FD-1090003	Seperating plate
92	SF188FD-1090004	Element
93	SF188FD-1090200	Air cleaner cover
94	SF188FD-1080200	Air shroud
95	SF188FD-1010001	Exhaust bolt
96	SF188FD-1100001	Muffler gasket
97	SF188FD-1100100	Exhaust pipe
98	GB5781-86	Screw M8×25
99	SF188FD-1100002	Muffler
100	SF188FD-1100105	Muffler protector
101	SF188FD-1100104	Muffler protector
102	SF188FD-1100103	Muffler protector
103	GB5789-86	Screw M8×20
104	SF188FD-1100006	Muffler supporter
105	SF05-1201100A	Plug I
106	SF05-1201100B	Plug II
107	SF168FD-11511013G	Lead wire

**Engine Model SFE390**



File No:SQGC200503/077

POS	Art.-Nr.	Bezeichnung
1	GB5789-86	Screw M6 x 8
2	SF188F-1060100-C	Recoil starter case
3	SF188F-1060009	Recoil starter spiral spring
4	SF188F-1060008	Recoil sheave
5	SF160F-1061006	Handle
6	SF188F-1060007	Rope
7	SF188F-1060006	Pawl spring
8	SF188F-1060004	Pawl guide spring
9	SF188F-1060005	Pawl
10	SF188F-1060003	Pawl guide
11	SF188F-1060002	Setting screw
12	GB5789-86	Screw M6 x 12
13	SF188F-1080100-C	Fan case
14	139FMD-1009301	Plug
15	GB5789-86	Screw M8 x 28
16	SF188F-1070200-C	Fuel meter
17	SF160F-1070100	Fuel tank cap
18	SF160F-1070006	Fuel filter
19	SF188F-1071000-C	Fuel tank
20	SF188F-1070100-C	Fuel tank supporter
21	GB6177-86	Nut M8
22	SF160F-1070300	Fuel hose connector
23	SF160F-1070001	Fuel hose clip
24	SF188F-1070001	Fuel hose
25	SF160F-1070003	Fuel hose protector

POS	Art.-Nr.	Bezeichnung
26	SF160F-1070001	Fuel hose clip
27	SF160F-1030005	Oil plug
28	SF160F-1030002	Oil seal
29	GB5789-86	Screw M8 x 40
30	SF188F-1030200	Oil seal
31	SF188F-1030011	Crankcase cover
32	SF188F-1030003	Oil gauge
33	SF188F-1020003	Cylinder head cover gasket
34	SF188F-1020100	Cylinder head cover
35	SF188F-1020006	Cylinder head cover fixing scr
36	SF188F-1020002	Breather hose
37	SF188F-1101000-C	Muffler
38	SF188FD-1100001	Exhaust gasket
39	SF188F-1100100-C	Muffler protector
40	SF188F-1090500-C	Air cleaner supporter
41	GB6177-86	Nut M6
42	SF188F-1090300-C	Air cleaner base
43	SF188F-1090200-C	Element
44	SF188F-1090001-C	Air cleaner cover
45	SF188F-1090100-C	Air cleaner cover fixing nut
46	SF188F-1110002	Carburetor connector
47	SF188F-1110001	Carburetor spring
48	SF188F-1080200-C	Air shroud with governing rac
49	SF188F-1110006	Governing level
50	SF160F-1110004	Governing level tightening screw

POS	Art.-Nr.	Bezeichnung
51	SF188F-1110004	Governing spring
52	SF188F-1110003	Governing shaft
53	SF188F-1110005	Governing shaft washer
54	SF188F-1110007	Cotter pin
55	SF188F-1050006	Flying wheel nut
56	SF188F-1060001	Starting hub
57	SF188F-1080002	Fan
58	SF188F-1121000	Flying wheel
59	SF188F-1030012	Wiring clip
60	SF188F-1030006	Crankcase
61	SF188F-1030100	Oil seal
62	SF160F-1126000	Oil alert diode
63	SF188F-1030001	Wiring clip
64	SF188F-1120001-C	Plastic panel
65	SF168F--1125000-C	Wire
66	SF168F--1121100-C	Engine switch
67	SF168FD--1125000-C	Engine stop wire
68	139FMD-1003003	Dowel pin
69	GB/T276-94 6207/C3	Bearing
70	SF188F-1030010	Crankcase gasket
71	SF188F-1127000	Oil alert sensor
72	GB/T276-94	Bearing
73	SF188F-1041000	Camshaft assy.
74	SF188F-1050303	Balance shaft

POS	Art.-Nr.	Bezeichnung
75	SF188F-1050304	Key
76	SF188F-1050301	Crankshaft
77	SF188F-1110008	Collar
78	SF160F-1110103	Governing gear shaft clip
79	SF188F-1110009	Governing gear shaft
80	SF188F-1110102	Flyweight pin
81	SF188F-1110103	Flyweight
82	SF188F-1110101	Governing gear
83	SF160F-1110108	Governing gear washer
84	SF188F-1050200	Connecting rod
85	SF188F-1050005	Piston pin
86	SF188F-1050004	Piston pin clip
87	SF188F-1050001	Piston
88	SF188F-1050100	Piston ring
	SF188F-1050003	Piston ring
	SF188F-1050002	Piston ring
89	SF188F-1040011	Exhaust valve
90	SF188F-1040003	Intake valve
91	SF188F-1040006	Exhaust spring seat
92	SF188F-1040004	Valve oil seal
93	SF188F-1040007	Valve spring
94	SF188F-1040002	Intake valve spring retainer
95	SF188F-1040008	Exhaust valve spring retainer
96	SF188F-1040009	Exhaust valve collar

POS	Art.-Nr.	Bezeichnung
97	139FMD-1003102	Oil drain plug gasket
98	139FMD-1003101	Oil drain plug
99	SF188F-1040012	Valve tapet
100	SF188F-1040010	Valve push rod
101	SF188F-1030009	Cylinder head bolt
102	SF188FD-1010001	Exhaust bolt
103	SF188F-1011000	Cylinder head assy.
104	SF188F-1080001	Air shroud
105	SF188F-1010002	Intake bolt
106	SF188F-1040005	Push rod guide
107	SF160F-1040010	Rocker arm bolt
108	SF188F-1040001	Rocker arm
109	SF160F-1040012	Valve clearance nut
110	SF160F--1040011	Valve clearance tightening nut
111	NHSP LA F5TC	Spark plug
112	SF188FD-1130003	Heating insulator gasket
113	SF188F-1130001	Carburetor insulator
114	SF188FD-1130002	Carburetor gasket
115	SF188F-1131000	Carburetor
116	SF188F-1130100	Air cleaner gasket
117	SF188F-1030008	Cylinder gasket
118	SF188F-1030013	Dowel pin
119	SF188F-1122000	T.C.I.
120	GB5789-86	Screw M6 x 29