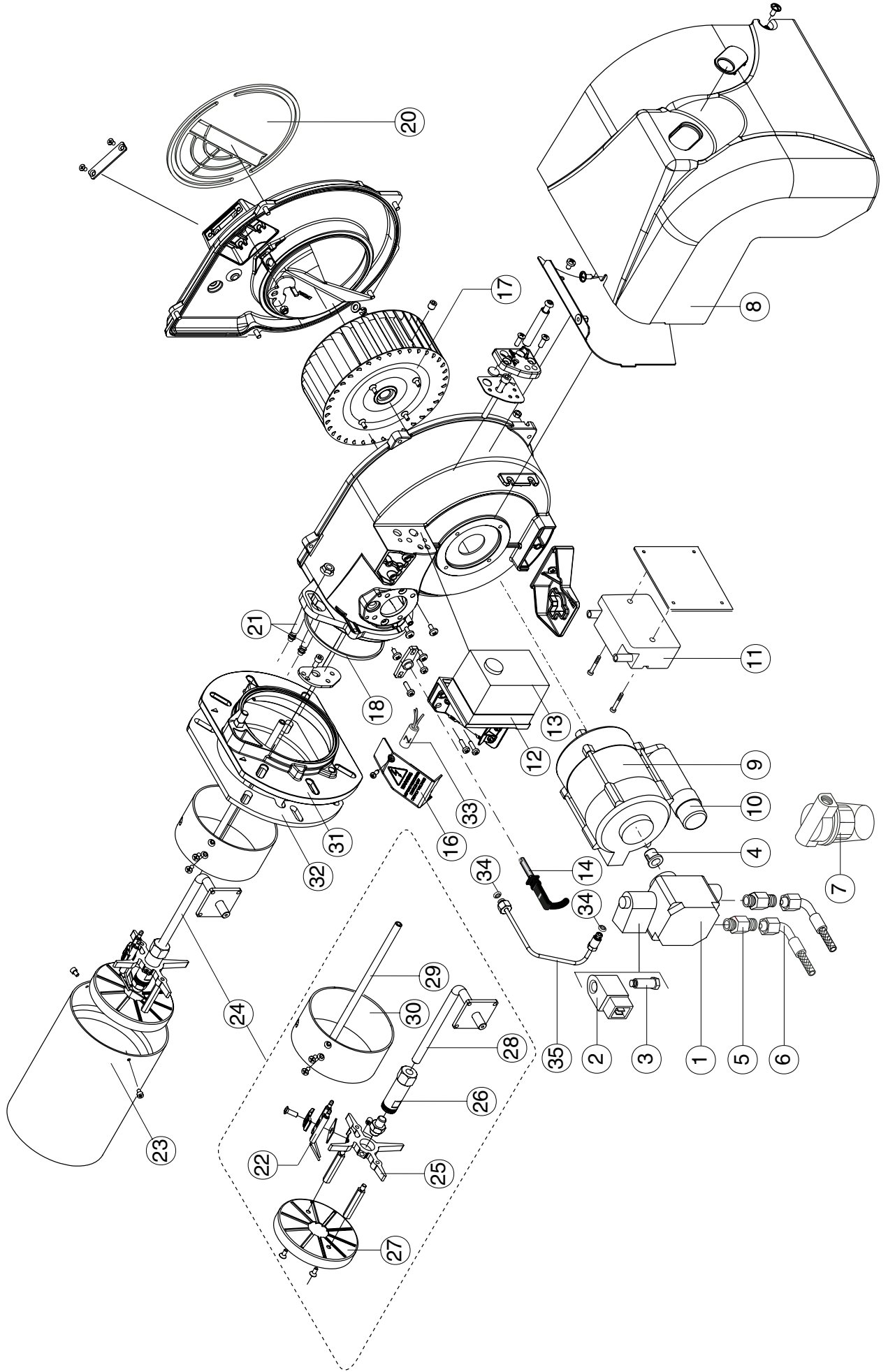


MAX 15 - MAX 20



BURNERS – MAX 15 / MAX 20

Pos.	Description	MAX 15	MAX 20
1	OIL PUMP DANFOSS	4031.197	4031.197
1.1	OIL FILTER PUMP	4031.094	4031.094
2	COIL DANFOSS	4031.019	4031.019
3	OIL VALVE DANFOSS	4031.195	4031.195
4	COUPLING AEG	4031.605	4031.605
5	NIPPLE TN 6 X 700	4031.302	4031.302
6	HOSES TN 6X600	4031.257	4031.257
7	FILTER	4031.071	4031.071
8	COVER	N/A	N/A
9	MOTOR 130 W AEG	4031.606	-
9	MOTOR 200 W AEG	-	4031.607
10	CAPACITOR 4 µF x 100-130 W AEG	4031.608	-
10	CAPACITOR 6 µF x 200 W AEG	-	4031.609
11	IGNITION TRANSFORMER COFI	4031.035	4031.035
12	CONTROL BOX BASE BRAHMA	4031.016	4031.016
13	CONTROL BOX BRAHMA GF3	4031.014	4031.014
14	PHOTOCELL BRAHMA	4031.018	4031.018
16	PROTECTION BOX	N/A	N/A
17	FAN 160 x 52	4031.610	-
17	FAN 160 x 62	-	4031.611
18	ORING	4031.612	4031.612
20	COVER AIR INLET	N/A	N/A
21	CABLES TC	S/R	-
21	CABLES TL	-	S/R
22	ELECTRODES	4031.613	4031.613
23	BLAST TUBE TC	S/R	-
23	BLAST TUBE TL	-	S/R
24	FIRING HEAD TC	N/A	-
24	FIRING HEAD TL	-	N/A
25	NOZZLE HOLDER SUPPORT	4031.614	4031.615
26	NOZZLE HOLDER	4031.616	4031.616
27	DIFFUSER	4031.617	4031.319
28	ROD TC	4031.618	-
28	ROD TL	-	4031.619
29	WAISTBAND ROD TC	4031.620	-
30	WAISTBAND	4031.621	-
31	FLANGE	S/R	S/R
32	GASKET	4031.622	4031.622
33	ANTIJAMMING FILTER	4031.311	4031.311
34	PIPE GASKET	4031.623	4031.623
35	PIPE	N/A	N/A
not shown	NOZZLE 2,50 GPH 60°S (GREEN 115 / BV460)	4031.100	-
not shown	NOZZLE 3,50 GPH 60°S (BG150)	4031.335	-
not shown	NOZZLE 4,00 GPH 60°S (GREEN 200 / BV680 / BG200)	-	4031.590
	COMPLETE OIL BURNER MAX 15 TC (GREEN 115 / BV460)	4031.599	-
	COMPLETE OIL BURNER MAX 15 TC (BG150)	4031.600	-
	COMPLETE OIL BURNER MAX 20 TL (GREEN 200 / BV680 / BG200)	-	4031.601

S/R – Parts available by special request only

N/A – Parts not available