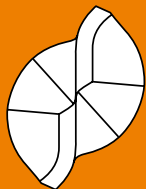


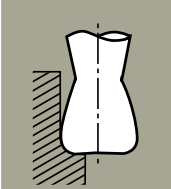
2 dents



Ebauche



1/2 Finition



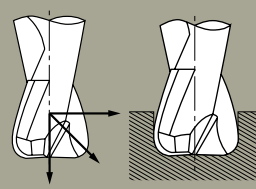
Rainurage



Finition



Pocketing



réf.
51262

USINAGE GRANDE VITESSE

SERIE LONGUE



② dents
fil à fil

Fraise Carbure Monobloc *alliages légers*

Ø D	LT	Lu x Lt	LSQ	Ø d x LQ	r	Z	Code Article	Ø D	LT	Lu x Lt	LSQ	Ø d x LQ	r	Z	Code Article
8	74	8 x 16	38	8 x 36	4	2	D51262D08R0400	18	110	18 x 35	62	18 x 48	4	2	D51262D18R0400
8	74	8 x 38	38	8 x 36	6	2	D51262D08R0600	18	110	18 x 35	62	18 x 48	6	2	D51262D18R0600
10	83	10 x 20	32	10 x 40	2,50	2	D51262D10R0250	20	125	20 x 38	75	20 x 50	2,50	2	D51262D20R0250
10	83	10 x 20	43	10 x 40	4	2	D51262D10R0400	20	125	20 x 38	75	20 x 50	4	2	D51262D20R0400
10	83	10 x 20	43	10 x 40	6	2	D51262D10R0600	20	125	20 x 38	75	20 x 50	6	2	D51262D20R0600
12	100	14 x 26	55	12 x 45	2,50	2	D51262D12R0250	25	136	25 x 40	80	25 x 56	2,50	2	D51262D25R0250
12	100	14 x 26	55	12 x 45	4	2	D51262D12R0400	25	136	25 x 40	80	25 x 56	4	2	D51262D25R0400
12	100	14 x 26	55	12 x 45	6	2	D51262D12R0600	25	136	25 x 40	80	25 x 56	6	2	D51262D25R0600
16	110	16 x 32	62	16 x 48	2,50	2	D51262D16R0250	32	170	32 x 60	110	32 x 60	2,50	2	D51262D32R0250
16	110	16 x 32	62	16 x 48	4	2	D51262D16R0400	32	170	32 x 60	110	32 x 60	4	2	D51262D32R0400
16	110	16 x 32	62	16 x 48	6	2	D51262D16R0600	32	170	32 x 60	110	32 x 60	6	2	D51262D32R0600
18	110	18 x 35	62	18 x 48	2,50	2	D51262D18R0250								

PERFORMANCE MATIERE

ALUMINIUM <12% Si
< 100 HB ●●●●●
< 160 HB ●●●●●

ALUMINIUM >12% Si
< 120 HB ●●●●●

BRONZE
< 100 HB ●●●●●

LAITON
< 200 HB ●●●●●

CUIVRE
< 200 HB ●●●●●

CUPRO ALU
< 200 HB ●●●●●

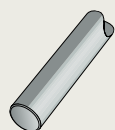
CARBONE ALU
●●

DUROPLASTIQUE
●●

THERMOPLASTIQUE
●●

RESINE EPOXY
●●

Attachement



Cylindrique
DIN 6535HA

Caractéristiques

Coupe à droite
Hélice à droite : 20°
Nombre de dents : 2
Dépouille : 8°
Coupe : 20°

Nature Outil

Carbure MK 12

Utilisation

USINAGE
GRANDE
VITESSE

Lubrification

Avec ou Sans

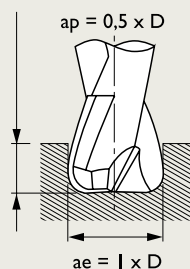
Normes

Normes Usine

Origines

Made in France

Passe Maxi



Ø D ▶ h10
Ø d ▶ h6
LT ▶ +2 / 0
Lu ▶ +1.5 / 0
r ▶ ± 0.01

VITESSES DE COUPE & AVANCE > PAGES 92 à 95

ISO 9001

