

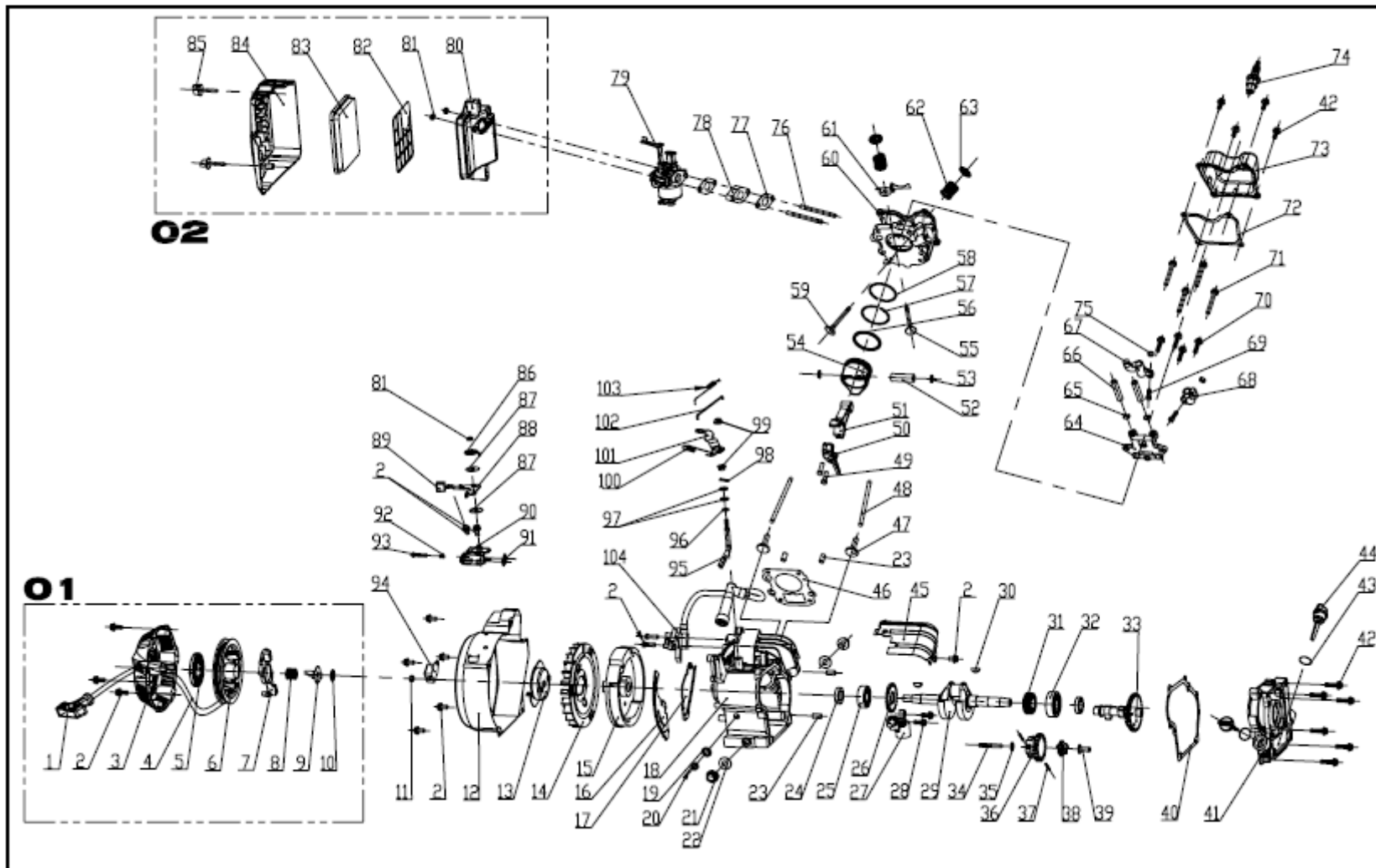
File No.: SQC 200509/004

POS	ART-Nr.	BEZEICHNUNG
1	GB5781	Screw M8×16
2	G1200C-001	Engine support rack
3	SPE80-D	Engine
4	G1200-006	Exhaust bolt
5	G1200-007	Exhaust gasket
6	G1200-008	Muffler
7	GB95	Flat washer 8
8	GB93	Spring washer 8
9	GB6170	Nut M8
10	G1200-014	Fuel hose
11	G1200B-035	Clip
12	G1200-009	Vibration absorber washer
13	GB/T16674	Screw M8×30
14	G1200-011	Fuel meter
15	G1200-012	Fuel filter
16	G1200-013	Fuel tank cap
17	G1200-010	Fuel tank
18	G1200-015	Fuel cock
19	G1200-021	Muffler supporter
20	GB95	Flat washer 6
21	GB818	Screw M6×12
22	G1200-016	Alternator front frame
23	GB5781	Screw M8×20
24	G1200-017	Rotor assembly
25	GB276	Ball bearing 6203
26	G1200-018	Stator assembly
27	G1200-019	Clip
28	GB95	Flat washer 5
29	GB93	Spring washer 5
30	GB818	Screw M5×15
31	G1200-020	Stator cover
32	G1200-022	Rear frame
33	GB93	Spring washer 6
34	G1200-024	Screw M6×95

POS	ART-Nr.	BEZEICHNUNG
35	G1200-023	Alternator center screw
36	G1200-025	Alternator rear cover
37	GB6184	Nut M8
38	GB5780	Screw M8×30
39	G1200C-002	Electrical machinery rack
40	ESE1100BS-01	Arc plate
41	ESE1100BS-02	Back bar
42	ESE1100BS-03	Frame
43	ESE1100BS-04	Fuel tank supporter
44	G1200B-036	Vibration absorber
45	G1200-002	Flat washer
46	GB5780	Screw M8×20
47	G1200C-003	Vibration absorber
48	ESE1100BS-05	Grounding wire
49	GB/T6170	Nut M4
50	GB93	Spring washer 4
51	GB95	Flat washer 4
52	ESE1100BS-06	Control panel cover
53	GB/T6170	Nut M3
54	GB93	Spring washer 3
55	GB95	Flat washer 3
56	GB818	Screw M4×15
57	G1200-029	Condenser rack
58	G1200-031	Condenser
59	ESE1100BS-07	Control panel
60	GB/T6170	Nut M6
61	GB818	Screw M3×6
62	G1200-032	Voltage meter
63	GB819.1	Screw M4×10
64	G1200-027	AC socket
65	G1200B-003	Engine switch
66	G1200-028	AC circuit breaker

Engine exploded drawing

Model **SPE80-D**



File No: **SQC200408/024**

POS	ART-Nr.	BEZEICHNUNG
	E80-01	complete starter assy (REF. NO. 1-10)
1	E80-01-001	Rope handle
2	GB5787-M6X10	Screw M6×10
3	E80-01-002	Starter case
4	E80-01-003	Rope
5	E80-01-004	Spiral spring
6	E80-01-005	Drum sheave
7	E80-01-006	Driving pawl
8	E80-01-007	Spring
9	E80-01-008	Driving pawl
10	E80-01-009	Lock washer
11	E80-002	Flywheel nut
12	E80-003	Fan case
13	E80-004	Starter bush
14	E80-005	Fan
15	E80-006	Flywheel
16	E80-007	Air shroud
17	E80-008	Air shroud
18	E80-009	Crankcase
19	GB/T95	Flat washer 10
20	GB/T41	Nut M10
21	E80-010	Drain plug
22	E80-011	Drain plug seal
23	E80-012	Dowel pin
24	GB276	Ball bearing 6203
25	E80-013	Oil seal
26	E80-014	Governing driving gear
27	E80-015	Oil level sensor
28	GB5787-M6X15	Screw M6×15
29	E80-016	Crankshaft
30	GB1099	Key 5.0×6.5×16
31	E80-017	Timing gear
32	GB276	Ball bearing 6303
33	E80-018	Camshaft assembly
34	E80-019	Governing gear shaft

POS	ART-Nr.	BEZEICHNUNG
35	E80-020	Washer
36	E80-021	Governing gear
37	E80-022	Flyweight pin
38	E80-023	Flyweight
39	E80-024	Collar
40	E80-025	Crankcase gasket
41	E80-026	Crankcase cover
42	GB5787	Screw M6×25
43	E80-027	Oil gauge seal
44	E80-028	Oil gauge
45	E80-029	Air shroud
46	E80-030	Cylinder gasket
47	E80-031	Valve lifter
48	E80-032	Push rod
49	E80-077	Connecting rod screw M6×25
50	E80-033	Connecting rod cap
51	E80-034	Connecting rod body
52	E80-035	Piston pin
53	E80-036	Piston pin circlip
54	E80-037	Poston
55	E80-038	Intake valve
56	E80-039	Third piston ring
57	E80-040	Second piston ring
58	E80-041	First piston ring
59	E80-042	Exhaust valve
60	E80-043	Cylinder head assembly
61	E80-044	Oil channel cover
62	E80-045	Valve spring
63	E80-046	Valve retainer
64	E80-047	Rocker arm seat
65	E80-048	Circlip
66	E80-049	Rocker arm shaft
67	E80-050	Rocker arm (A)
68	E80-051	Rocker arm (B)
69	E80-052	Valve clearance adjusting screw

POS	ART-Nr.	BEZEICHNUNG
70	GB5787-M6X15	Screw M6×15
71	GB5787-M8X55	Screw M8×55
72	E80-053	Head cover gasket
73	E80-054	Cylinder head cover assembly
74	E80-055	Spark plug
75	E80-056	Valve clearance adjusting nut
76	E80-057	Intake bolt
77	E80-058	Carburetor gasket
78	E80-059	Carburetor connector
79	E80-060	Carburetor
80	E80-02-001	Air cleaner base
81	GB/T6170	Nut M6
82	E80-02-002	Element seat
83	E80-02-003	Air cleaner element
84	E80-02-004	Air cleaner cover
85	E80-02-005	Cover screw
86	E80-061	Press plate
87	E80-062	Flat washer
88	E80-063	Throttle control lever
89	E80-064	Cap of governing lever
90	E80-065	Governing rack
91	E80-066	Engine saw
92	E80-067	Spring
93	GB/T67	Screw M5×30
94	E80-068	Diode
95	E80-069	Governing shaft
96	E80-070	Circlip
97	E80-071	Flat washer 8
98	E80-072(includ	Clip
99	E80-073	Nut
100	E80-074	Governing spring
101	E80-075(includ	Governing lever
102	E80-076	Carburetor connecting rod
103	E80-077	Carburetor spring
104	E80-078	T.C.I.