

ESE 20 DA

ENDRESS

Wir machen Strom



Genset

| | |
|-----------------------|--------------------|
| Construction | open genset |
| Prime power [PRP] | 19,0 / 15,2 kVA/kW |
| Emergency power [LTP] | 20,1 / 16,1 kVA/kW |
| Frequency | 50 Hz |
| Voltage | 400/230 V |

Engine type

| | |
|--------------------------|------------------------|
| Manufacturer | DEUTZ |
| Model | F3L 2011 |
| Prime power | 19,1 kW |
| Speed | 1500 rpm |
| Cooling system | Air |
| Injection system | single injection pumps |
| No. of cylinders | 3 in line |
| Displacement | 2330 cm ³ |
| Standard governor | mechanical +/- 5 % |
| Lubricating oil capacity | 5,5 l |

Fuel/Lube consumption

| | |
|--------------------------|---------------------------|
| at 50 % load [PRP] | 2,9 l/h → 254 g/kWh |
| at 75 % load [PRP] | 3,9 l/h → 228 g/kWh |
| at 100 % load [PRP] | 5,1 l/h → 223 g/kWh |
| Oil consumption at [PRP] | 0,3 % of fuel consumption |

Cooling and exhaust system

| | |
|----------------------------|------------------------|
| Combustion air flow at PRP | 86,4 m ³ /h |
| Cooling air flow rate | 1075 m ³ /h |
| Exhaust gas flow at PRP | 224 m ³ /h |
| Exhaust gas temp. at LTP | 480 °C |
| Max. exhaust back pressure | 30 mbar |
| Exhaust flange/pipe Ø | 45 mm |

Electrical system

| | |
|------------------|------------|
| Electric circuit | 12 V |
| Battery (ACP) | min. 66 Ah |
| Starting motor | 3,0 kW |

Alternator

| | |
|--------------------|-------------------|
| Manufacturer/model | Linz/E1S 13M/4-19 |
| Efficiency at ¾ | 86,5 % |
| Power at 27 °C | 19,0 kVA/kW |
| Insulation | CLASS H |
| Protection | IP 23 |
| Power factor cos φ | 0,8 |
| Regulator | Compound |



General data

| | |
|------------------------|---------------|
| Dimension (open type) | 1400x750x1700 |
| Weight | 510 kg |
| Fuel tank capacity | 90 l |
| Autonomy at 50 % load | 31,0 h |
| Autonomy at 75 % load | 23,0 h |
| Autonomy at 100 % load | 17,6 h |

ESE 30 DA

Genset

| | |
|-----------------------|--------------------|
| Construction | open genset |
| Prime power [PRP] | 29,0 / 23,2 kVA/kW |
| Emergency power [LTP] | 30,0 / 24,0 kVA/kW |
| Frequency | 50 Hz |
| Voltage | 400/230 V |

Engine type

| | |
|--------------------------|------------------------|
| Manufacturer | DEUTZ |
| Model | F4L 2011 |
| Prime power | 27,8 kW |
| Speed | 1500 rpm |
| Cooling system | Air |
| Injection system | single injection pumps |
| No. of cylinders | 4 in line |
| Displacement | 3110 cm ³ |
| Standard governor | mechanical +/- 5 % |
| Lubricating oil capacity | 10,0 l |

Fuel/Lube consumption

| | |
|--------------------------|---------------------------|
| at 50 % load [PRP] | 4,0 l/h → 240 g/kWh |
| at 75 % load [PRP] | 5,4 l/h → 216 g/kWh |
| at 100 % load [PRP] | 7,1 l/h → 213 g/kWh |
| Oil consumption at [PRP] | 0,3 % of fuel consumption |

Cooling and exhaust system

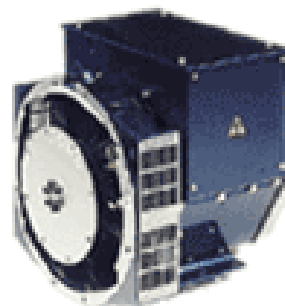
| | |
|----------------------------|------------------------|
| Combustion air flow at PRP | 117 m ³ /h |
| Cooling air flow rate | 1490 m ³ /h |
| Exhaust gas flow at PRP | 305 m ³ /h |
| Exhaust gas temp. at LTP | 480 °C |
| Max. exhaust back pressure | 30 mbar |
| Exhaust flange/pipe Ø | 45 mm |

Electrical system

| | |
|------------------|------------|
| Electric circuit | 12 V |
| Battery (ACP) | min. 66 Ah |
| Starting motor | 3,0 kW |

Alternator

| | |
|--------------------|----------------------|
| Manufacturer/model | Stamford/BCI 184F |
| Efficiency at ¾ | 84,4 % |
| Power at 27 °C | 30,0 kVA/kW |
| Insulation | CLASS H |
| Protection | IP 23 |
| Power factor cos φ | 0,8 |
| Regulator | Electronic +/- 1,5 % |



General data

| | |
|------------------------|---------------|
| Dimension (open type) | 1400x750x1560 |
| Weight | 655 kg |
| Fuel tank capacity | 90 l |
| Autonomy at 50 % load | 22,5 h |
| Autonomy at 75 % load | 16,6 h |
| Autonomy at 100 % load | 12,6 h |

ESE 40 DA

ENDRESS

Wir machen Strom

Genset

| | |
|-----------------------|--------------------|
| Construction | open genset |
| Prime power [PRP] | 39,9 / 31,9 kVA/kW |
| Emergency power [LTP] | 41,0 / 32,8 kVA/kW |
| Frequency | 50 Hz |
| Voltage | 400/230 V |

Engine type

| | |
|--------------------------|----------------------|
| Manufacturer | DEUTZ |
| Model | F4L 912 |
| Prime power | 37,5 kW |
| Speed | 1500 rpm |
| Cooling system | Air |
| Injection system | direct injection |
| No. of cylinders | 4 in line |
| Displacement | 3770 cm ³ |
| Standard governor | mechanical +/- 5 % |
| Lubricating oil capacity | 11,0 l |

Fuel/Lube consumption

| | |
|--------------------------|---------------------------|
| at 50 % load [PRP] | 5,2 l/h → 232 g/kWh |
| at 75 % load [PRP] | 7,2 l/h → 214 g/kWh |
| at 100 % load [PRP] | 9,7 l/h → 217 g/kWh |
| Oil consumption at [PRP] | 0,5 % of fuel consumption |

Cooling and exhaust system

| | |
|----------------------------|------------------------|
| Combustion air flow at PRP | 144 m ³ /h |
| Cooling air flow rate | 1810 m ³ /h |
| Exhaust gas flow at PRP | 353 m ³ /h |
| Exhaust gas temp. at LTP | 490 °C |
| Max. exhaust back pressure | 30 mbar |
| Exhaust flange/pipe Ø | 66 mm |

Electrical system

| | |
|------------------|-------------|
| Electric circuit | 12 V |
| Battery (ACP) | min. 110 Ah |
| Starting motor | 3,0 kW |

Alternator

| | |
|--------------------|----------------------|
| Manufacturer/model | Stamford/BCI 184J |
| Efficiency at ¾ | 86,2 % |
| Power at 27 °C | 42,5 kVA/kW |
| Insulation | CLASS H |
| Protection | IP 23 |
| Power factor cos φ | 0,8 |
| Regulator | Electronic +/- 1,5 % |

STAMFORD
power generation



General data

| | |
|------------------------|---------------|
| Dimension (open type) | 1800x750x1710 |
| Weight | 776 kg |
| Fuel tank capacity | 90 l |
| Autonomy at 50 % load | 17,3 h |
| Autonomy at 75 % load | 12,5 h |
| Autonomy at 100 % load | 9,3 h |

ESE 60 DA

ESE 60 DA/AS

ENDRESS ®
Wir machen Strom

Genset

| | |
|-----------------------|--------------------|
| Construction | open genset |
| Prime power [PRP] | 61,0 / 48,8 kVA/kW |
| Emergency power [LTP] | 62,1 / 49,7 kVA/kW |
| Frequency | 50 Hz |
| Voltage | 400/230 V |

Engine type

| | |
|--------------------------|----------------------|
| Manufacturer | DEUTZ |
| Model | F6L 2011 |
| Prime power | 56,0 kW |
| Speed | 1500 rpm |
| Cooling system | Air |
| Injection system | direct injection |
| No. of cylinders | 6 in line |
| Displacement | 5650 cm ³ |
| Standard governor | mechanical +/- 5 % |
| Lubricating oil capacity | 13,5 l |

Fuel/Lube consumption

| | |
|--------------------------|---------------------------|
| at 50 % load [PRP] | 7,8 l/h → 233 g/kWh |
| at 75 % load [PRP] | 10,8 l/h → 214 g/kWh |
| at 100 % load [PRP] | 14,5 l/h → 216 g/kWh |
| Oil consumption at [PRP] | 0,5 % of fuel consumption |

Cooling and exhaust system

| | |
|----------------------------|------------------------|
| Combustion air flow at PRP | 216 m ³ /h |
| Cooling air flow rate | 2610 m ³ /h |
| Exhaust gas flow at PRP | 527 m ³ /h |
| Exhaust gas temp. at LTP | 485 °C |
| Max. exhaust back pressure | 30 mbar |
| Exhaust flange/pipe Ø | 66 mm |

Electrical system

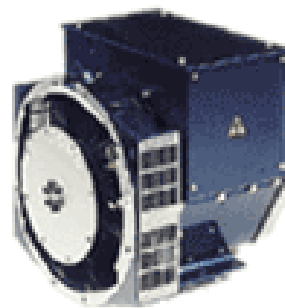
| | |
|------------------|-------------|
| Electric circuit | 12 V |
| Battery (ACP) | min. 110 Ah |
| Starting motor | 3,0 kW |

Alternator

| | |
|--------------------|----------------------|
| Manufacturer/model | Stamford/UCI 224E |
| Efficiency at ¾ | 88,0 % |
| Power at 27 °C | 63,0 kVA/kW |
| Insulation | CLASS H |
| Protection | IP 23 |
| Power factor cos φ | 0,8 |
| Regulator | Electronic +/- 1,5 % |

STAMFORD
 power generation


DEUTZ®



General data

Open version/Soundproof version

| | |
|------------------------|----------------------------------|
| Dimension | 2200x1000x1620 2600x1150x1680 |
| Weight | 954 kg/ 1310 kg |
| Fuel tank capacity | 105 l / 240 l |
| Autonomy at 50 % load | 30,7 h / 13,5 h |
| Autonomy at 75 % load | 22,2 h / 9,7 h |
| Autonomy at 100 % load | 16,5 h / 7,2 h |

ESE 15 PW ESE 15 PW-B

Genset

| | |
|-----------------------|--------------------|
| Prime power [PRP] | 12,7 / 10,2 kVA/kW |
| Emergency power [LTP] | 13,8 / 11,0 kVA/kW |
| Frequency | 50 Hz |
| Voltage | 400/230 V |

Engine type

| | |
|--------------------------|----------------------|
| Manufacturer | PERKINS |
| Model | 403C-15G |
| Prime power | 12 kW |
| Speed | 1500 rpm |
| Cooling system | Water |
| Intake | Natural |
| Cylinders | 3 in line |
| Displacement | 1496 cm ³ |
| Standard governor | mechanical |
| Lubricating oil capacity | 6 l |
| Coolant capacity | N/A |

Fuel/Lube consumption

| | |
|------------------------|---------|
| at 75 % load | 2,7 l/h |
| at 100 % load | 3,6 l/h |
| Lube oil at PRP (max.) | N/A |

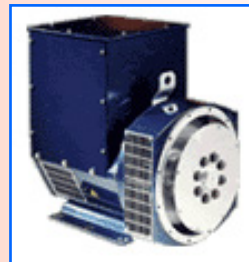
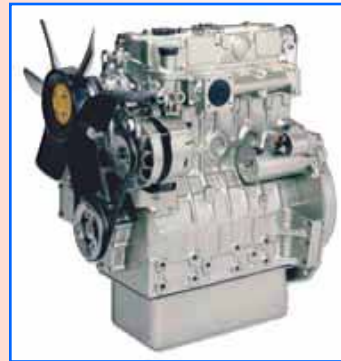
Electrical system

| | |
|-----------------------|----------------------|
| Electric circuit | 12 V |
| Battery (ACP) | 1 x 55 Ah |
| Starting motor | 2 kW |
| Autonomy (open) | 14,0 h (at 75% load) |
| Autonomy (soundproof) | 14,0 h (at 75% load) |

Alternator

| | |
|--------------------|--------------------|
| Manufacturer | Linz |
| Model | E1S13 M4/13 |
| Efficiency at ¾ | 85,4 % |
| Power at 27 °C | 13,8 / 11,0 kVA/kW |
| Insulation | CLASS H |
| Protection | IP 23 |
| Power factor cos φ | 0,8 |
| Regulator | compound |

| | |
|----------------------------|-----|
| Combustion air flow at PRP | N/A |
| Cooling air flow rate | N/A |
| Exhaust gas flow at PRP | N/A |
| Exhaust gas temp. at LTP | N/A |
| Max. exhaust back pressure | N/A |



General data

| | |
|----------------------------|-------------------|
| Dimension (open) | 1600x870x1000 |
| Dimension (soundproof) | 1600x870x1072 |
| Weight (open/soundproof) | 450 / 472 kg |
| Sound power level (LWA) | 94 dB(A) |
| Sound pressure level at 7m | 69 dB(A) |
| Fuel tank capacity | 51 l (open) |
| Fuel tank capacity | 51 l (soundproof) |

ESE 20 PW

ESE 20 PW-B

Genset

| | |
|-----------------------|--------------------|
| Prime power [PRP] | 19,0 / 15,2 kVA/kW |
| Emergency power [LTP] | 20,1 / 16,1 kVA/kW |
| Frequency | 50 Hz |
| Voltage | 400/230 V |

Engine type

| | |
|--------------------------|----------------------|
| Manufacturer | PERKINS |
| Model | 404C-22G |
| Prime power | 18,4 kW |
| Speed | 1500 rpm |
| Cooling system | Water |
| Intake | Natural |
| Cylinders | 4 in line |
| Displacement | 2216 cm ³ |
| Standard governor | mechanical |
| Lubricating oil capacity | 10,6 l |
| Coolant capacity | N/A |

Fuel/Lube consumption

| | |
|------------------------|---------|
| at 75 % load | 4,0 l/h |
| at 100 % load | 5,3 l/h |
| Lube oil at PRP (max.) | N/A |

Electrical system

| | |
|-----------------------|----------------------|
| Electric circuit | 12 V |
| Battery (ACP) | 1 x 55 Ah |
| Starting motor | 2 kW |
| Autonomy (open) | 12,0 h (at 75% load) |
| Autonomy (soundproof) | 12,0 h (at 75% load) |

Alternator

| | |
|--------------------|--------------------|
| Manufacturer | Linz |
| Model | E1S13 M4/19 |
| Efficiency at ¾ | 86,5 % |
| Power at 27 °C | 20,1 / 16,0 kVA/kW |
| Insulation | CLASS H |
| Protection | IP 23 |
| Power factor cos φ | 0,8 |
| Regulator | compound |

| | |
|----------------------------|-----|
| Combustion air flow at PRP | N/A |
| Cooling air flow rate | N/A |
| Exhaust gas flow at PRP | N/A |
| Exhaust gas temp. at LTP | N/A |
| Max. exhaust back pressure | N/A |



General data

| | |
|----------------------------|-------------------|
| Dimension (open) | 1600x870x1000 |
| Dimension (soundproof) | 1600x870x1072 |
| Weight (open/soundproof) | 480 / 534 kg |
| Sound power level (LWA) | 93 dB(A) |
| Sound pressure level at 7m | 68 dB(A) |
| Fuel tank capacity | 51 l (open) |
| Fuel tank capacity | 51 l (soundproof) |

ESE 20 DL-B

ENDRESS 
Wir machen Strom

Genset

| | |
|-----------------------|--------------------|
| Prime power [PRP] | 20 / 16 kVA/kW |
| Emergency power [LTP] | 21,1 / 16,8 kVA/kW |
| Frequency | 50 Hz |
| Voltage | 400/230 V |

Engine type

| | |
|--------------------------|----------------------|
| Manufacturer | DEUTZ |
| Model | F3M 2011 |
| Prime power | 19 kW |
| Speed | 1500 rpm |
| Cooling system | Oil |
| Intake | Natural |
| Cylinders | 3 in line |
| Displacement | 2330 cm ³ |
| Standard governor | mechanical |
| Lubricating oil capacity | 5,5 l |
| Coolant capacity | - |

Fuel/Lube consumption

| | |
|------------------------|---------|
| at 75 % load | 3,9 l/h |
| at 100 % load | 5,2 l/h |
| Lube oil at PRP (max.) | 0,3 % |

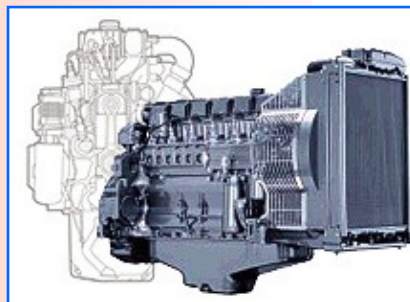
Electrical system

| | |
|-----------------------|----------------------|
| Electric circuit | 12 V |
| Battery (ACP) | 1 x 70 Ah |
| Starting motor | 3 kW |
| Autonomy (open) | - (at 75% load) |
| Autonomy (soundproof) | 13,1 h (at 75% load) |

Alternator

| | |
|--------------------|-----------------------|
| Manufacturer | Stamford |
| Model | BCI 184 E |
| Efficiency at ¾ | 84,2 % |
| Power at 27 °C | 22 / 18 kVA/kW |
| Insulation | CLASS H |
| Protection | IP 23 |
| Power factor cos φ | 0,8 |
| Regulator | electr. SX460 +/-1,5% |

| | |
|----------------------------|------------------------|
| Combustion air flow at PRP | 86 m ³ /h |
| Cooling air flow rate | 1800 m ³ /h |
| Exhaust gas flow at PRP | 230 m ³ /h |
| Exhaust gas temp. at LTP | 540 °C |
| Max. exhaust back pressure | 30 mbar |



STAMFORD
power generation



General data

| | |
|----------------------------|-------------------|
| Dimension (open) | - |
| Dimension (soundproof) | 2000x920x1300 |
| Weight (open/soundproof) | - / 784 kg |
| Sound power level (LWA) | 96 dB(A) |
| Sound pressure level at 7m | 71 dB(A) |
| Fuel tank capacity | - l (open) |
| Fuel tank capacity | 51 l (soundproof) |

ESE 30 DL-B

ENDRESS 
Wir machen Strom

Genset

| | |
|-----------------------|----------------|
| Prime power [PRP] | 29 / 23 kVA/kW |
| Emergency power [LTP] | 30 / 24 kVA/kW |
| Frequency | 50 Hz |
| Voltage | 400/230 V |

Engine type

| | |
|--------------------------|----------------------|
| Manufacturer | DEUTZ |
| Model | F4M 2011 |
| Prime power | 27,6 kW |
| Speed | 1500 rpm |
| Cooling system | Oil |
| Intake | Natural |
| Cylinders | 4 in line |
| Displacement | 3110 cm ³ |
| Standard governor | mechanical |
| Lubricating oil capacity | 10 l |
| Coolant capacity | - |

Fuel/Lube consumption

| | |
|------------------------|---------|
| at 75 % load | 5,3 l/h |
| at 100 % load | 7,1 l/h |
| Lube oil at PRP (max.) | 0,3 % |

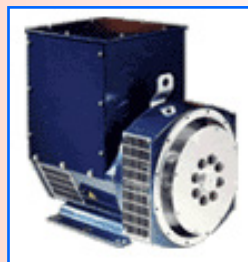
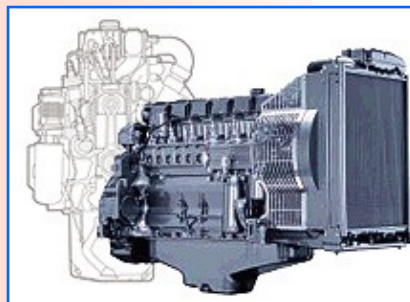
Electrical system

| | |
|-----------------------|---------------------|
| Electric circuit | 12 V |
| Battery (ACP) | 1 x 70 Ah |
| Starting motor | 3 kW |
| Autonomy (open) | - (at 75% load) |
| Autonomy (soundproof) | 9,6 h (at 75% load) |

Alternator

| | |
|--------------------|-----------------------|
| Manufacturer | Stamford |
| Model | BCI 184 F |
| Efficiency at ¾ | 85,8 % |
| Power at 27 °C | 29 / 23 kVA/kW |
| Insulation | CLASS H |
| Protection | IP 23 |
| Power factor cos φ | 0,8 |
| Regulator | electr. SX460 +/-1,5% |

| | |
|----------------------------|------------------------|
| Combustion air flow at PRP | 117 m ³ /h |
| Cooling air flow rate | 1800 m ³ /h |
| Exhaust gas flow at PRP | 314 m ³ /h |
| Exhaust gas temp. at LTP | 600 °C |
| Max. exhaust back pressure | 30 mbar |



STAMFORD
power generation



General data

| | |
|----------------------------|-------------------|
| Dimension (open) | - |
| Dimension (soundproof) | 2000x920x1300 |
| Weight (open/soundproof) | - / 916 kg |
| Sound power level (LWA) | 97 dB(A) |
| Sound pressure level at 7m | 72 dB(A) |
| Fuel tank capacity | - l (open) |
| Fuel tank capacity | 51 l (soundproof) |

ESE 40 DL-B

ENDRESS 
Wir machen Strom

Genset

| | |
|-----------------------|----------------|
| Prime power [PRP] | 39 / 31 kVA/kW |
| Emergency power [LTP] | 41 / 33 kVA/kW |
| Frequency | 50 Hz |
| Voltage | 400/230 V |

Engine type

| | |
|--------------------------|----------------------|
| Manufacturer | DEUTZ |
| Model | BF4M 2011 |
| Prime power | 36,4 kW |
| Speed | 1500 rpm |
| Cooling system | Oil |
| Intake | Turbo |
| Cylinders | 4 in line |
| Displacement | 3110 cm ³ |
| Standard governor | mechanical |
| Lubricating oil capacity | 10 l |
| Coolant capacity | - |

Fuel/Lube consumption

| | |
|------------------------|---------|
| at 75 % load | 7,1 l/h |
| at 100 % load | 9,4 l/h |
| Lube oil at PRP (max.) | 0,5 % |

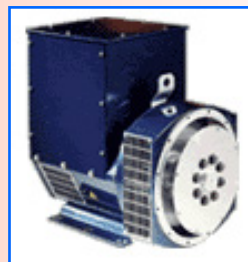
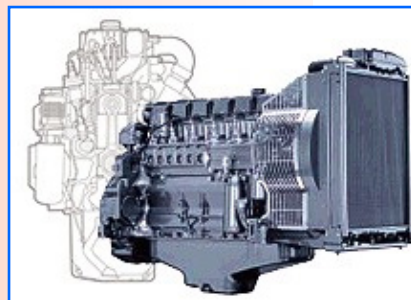
Electrical system

| | |
|-----------------------|---------------------|
| Electric circuit | 12 V |
| Battery (ACP) | 1 x 70 Ah |
| Starting motor | 3 kW |
| Autonomy (open) | - (at 75% load) |
| Autonomy (soundproof) | 7,2 h (at 75% load) |

Alternator

| | |
|--------------------|-----------------------|
| Manufacturer | Stamford |
| Model | BCI 184 J |
| Efficiency at ¾ | 86,6 % |
| Power at 27 °C | 44 / 35 kVA/kW |
| Insulation | CLASS H |
| Protection | IP 23 |
| Power factor cos φ | 0,8 |
| Regulator | electr. SX460 +/-1,5% |

| | |
|----------------------------|------------------------|
| Combustion air flow at PRP | 151 m ³ /h |
| Cooling air flow rate | 2370 m ³ /h |
| Exhaust gas flow at PRP | 432 m ³ /h |
| Exhaust gas temp. at LTP | 610 °C |
| Max. exhaust back pressure | 30 mbar |



STAMFORD
power generation



General data

| | |
|----------------------------|-------------------|
| Dimension (open) | - |
| Dimension (soundproof) | 2000x920x1300 |
| Weight (open/soundproof) | - / 918 kg |
| Sound power level (LWA) | 96 dB(A) |
| Sound pressure level at 7m | 71 dB(A) |
| Fuel tank capacity | - l (open) |
| Fuel tank capacity | 51 l (soundproof) |

ESE 15 PW/MS

ESE 15 PW/AS

ENDRESS  [®]
Wir machen Strom

Genset

| | |
|-----------------------|--------------------|
| Prime power [PRP] | 13,0 / 10,4 kVA/kW |
| Emergency power [LTP] | 14,4 / 11,5 kVA/kW |
| Frequency | 50 Hz |
| Voltage | 400/230 V |

Engine type

| | |
|--------------------------|----------------------|
| Manufacturer | PERKINS |
| Model | 403C-15G |
| Prime power | 12 kW |
| Speed | 1500 rpm |
| Cooling system | Water |
| Intake | Natural |
| Cylinders | 3 in line |
| Displacement | 1496 cm ³ |
| Standard governor | mechanical |
| Lubricating oil capacity | 6 l |
| Coolant capacity | N/A |

Fuel/Lube consumption

| | |
|------------------------|---------|
| at 75 % load | 2,7 l/h |
| at 100 % load | 3,6 l/h |
| Lube oil at PRP (max.) | N/A |

Electrical system

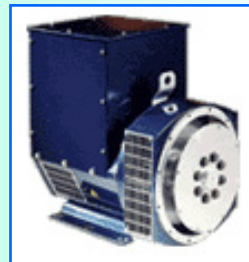
| | |
|-----------------------|----------------------|
| Electric circuit | 12 V |
| Battery (ACP) | 1 x 55 Ah |
| Starting motor | 2 kW |
| Autonomy (open) | - (at 75% load) |
| Autonomy (soundproof) | 17,9 h (at 75% load) |

Alternator

| | |
|--------------------|--------------------|
| Manufacturer | MeccAlte |
| Model | ECO 3 2L |
| Efficiency at ¾ | 86,5 % |
| Power at 27 °C | 14,3 / 11,4 kVA/kW |
| Insulation | CLASS H |
| Protection | IP 23 |
| Power factor cos φ | 0,8 |
| Regulator | electronic |

| | |
|----------------------------|-----|
| Combustion air flow at PRP | N/A |
| Cooling air flow rate | N/A |
| Exhaust gas flow at PRP | N/A |
| Exhaust gas temp. at LTP | N/A |
| Max. exhaust back pressure | N/A |

 **Perkins** [®]



STAMFORD
 power generation

General data

| | |
|----------------------------|-------------------|
| Dimension (open) | - |
| Dimension (soundproof) | 1800x830x1295 |
| Weight (open/soundproof) | - / 700 kg |
| Sound power level (LWA) | 87 dB(A) |
| Sound pressure level at 7m | 62 dB(A) |
| Fuel tank capacity | - (open) |
| Fuel tank capacity | 50 l (soundproof) |

ESE 20 PW/MS ESE 20 PW/AS

ENDRESS  [®]
Wir machen Strom

Genset

| | |
|-----------------------|--------------------|
| Prime power [PRP] | 19,4 / 15,5 kVA/kW |
| Emergency power [LTP] | 21,4 / 17,1 kVA/kW |
| Frequency | 50 Hz |
| Voltage | 400/230 V |

Engine type

| | |
|--------------------------|----------------------|
| Manufacturer | PERKINS |
| Model | 404C-22G |
| Prime power | 18,4 kW |
| Speed | 1500 rpm |
| Cooling system | Water |
| Intake | Natural |
| Cylinders | 4 in line |
| Displacement | 2216 cm ³ |
| Standard governor | mechanical |
| Lubricating oil capacity | 10,6 l |
| Coolant capacity | N/A |

Fuel/Lube consumption

| | |
|------------------------|---------|
| at 75 % load | 4,0 l/h |
| at 100 % load | 5,3 l/h |
| Lube oil at PRP (max.) | N/A |

Electrical system

| | |
|-----------------------|----------------------|
| Electric circuit | 12 V |
| Battery (ACP) | 1 x 55 Ah |
| Starting motor | 2 kW |
| Autonomy (open) | - (at 75% load) |
| Autonomy (soundproof) | 12,5 h (at 75% load) |

Alternator

| | |
|--------------------|-----------------------|
| Manufacturer | Stamford |
| Model | BCI 184 E |
| Efficiency at ¾ | 84,2 % |
| Power at 27 °C | 22 / 18 kVA/kW |
| Insulation | CLASS H |
| Protection | IP 23 |
| Power factor cos φ | 0,8 |
| Regulator | electr. SX460 +/-1,5% |

| | |
|----------------------------|-----|
| Combustion air flow at PRP | N/A |
| Cooling air flow rate | N/A |
| Exhaust gas flow at PRP | N/A |
| Exhaust gas temp. at LTP | N/A |
| Max. exhaust back pressure | N/A |

 **Perkins** [®]



STAMFORD
power generation

General data

| | |
|----------------------------|-------------------|
| Dimension (open) | - |
| Dimension (soundproof) | 1800x830x1295 |
| Weight (open/soundproof) | - / 765 kg |
| Sound power level (LWA) | 88 dB(A) |
| Sound pressure level at 7m | 63 dB(A) |
| Fuel tank capacity | - (open) |
| Fuel tank capacity | 50 l (soundproof) |

ESE 20 DL

ESE 20 DL/AS/MS

ENDRESS  [®]
Wir machen Strom

Genset

| | |
|-----------------------|--------------------|
| Prime power [PRP] | 20 / 16 kVA/kW |
| Emergency power [LTP] | 21,1 / 16,8 kVA/kW |
| Frequency | 50 Hz |
| Voltage | 400/230 V |

Engine type

| | |
|--------------------------|----------------------|
| Manufacturer | DEUTZ |
| Model | F3M 2011 |
| Prime power | 19 kW |
| Speed | 1500 rpm |
| Cooling system | Oil |
| Intake | Natural |
| Cylinders | 3 in line |
| Displacement | 2330 cm ³ |
| Standard governor | mechanical |
| Lubricating oil capacity | 5,5 l |
| Coolant capacity | - |

Fuel/Lube consumption

| | |
|------------------------|---------|
| at 75 % load | 3,9 l/h |
| at 100 % load | 5,2 l/h |
| Lube oil at PRP (max.) | 0,3 % |

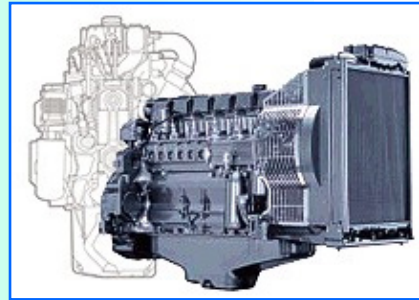
Electrical system

| | |
|-----------------------|----------------------|
| Electric circuit | 12 V |
| Battery (ACP) | 1 x 70 Ah |
| Starting motor | 3 kW |
| Autonomy (open) | 25,6 h (at 75% load) |
| Autonomy (soundproof) | 29,5 h (at 75% load) |

Alternator

| | |
|--------------------|-----------------------|
| Manufacturer | Stamford |
| Model | BCI 184 E |
| Efficiency at ¾ | 84,2 % |
| Power at 27 °C | 22 / 18 kVA/kW |
| Insulation | CLASS H |
| Protection | IP 23 |
| Power factor cos φ | 0,8 |
| Regulator | electr. SX460 +/-1,5% |

| | |
|----------------------------|------------------------|
| Combustion air flow at PRP | 86 m ³ /h |
| Cooling air flow rate | 1800 m ³ /h |
| Exhaust gas flow at PRP | 230 m ³ /h |
| Exhaust gas temp. at LTP | 540 °C |
| Max. exhaust back pressure | 30 mbar |



General data

| | |
|----------------------------|--------------------|
| Dimension (open) | 1400x750x1700 |
| Dimension (soundproof) | 2225x1100x1290 |
| Weight (open/soundproof) | 554 / 910 kg |
| Sound power level (LWA) | 92 dB(A) |
| Sound pressure level at 7m | 67 dB(A) |
| Fuel tank capacity | 90 l (open) |
| Fuel tank capacity | 120 l (soundproof) |

ESE 30 DL

ESE 30 DL/AS/MS

ENDRESS  [®]
Wir machen Strom

Genset

| | |
|-----------------------|----------------|
| Prime power [PRP] | 29 / 23 kVA/kW |
| Emergency power [LTP] | 30 / 24 kVA/kW |
| Frequency | 50 Hz |
| Voltage | 400/230 V |

Engine type

| | |
|--------------------------|----------------------|
| Manufacturer | DEUTZ |
| Model | F4M 2011 |
| Prime power | 27,6 kW |
| Speed | 1500 rpm |
| Cooling system | Oil |
| Intake | Natural |
| Cylinders | 4 in line |
| Displacement | 3110 cm ³ |
| Standard governor | mechanical |
| Lubricating oil capacity | 10 l |
| Coolant capacity | - |

Fuel/Lube consumption

| | |
|------------------------|---------|
| at 75 % load | 5,3 l/h |
| at 100 % load | 7,1 l/h |
| Lube oil at PRP (max.) | 0,3 % |

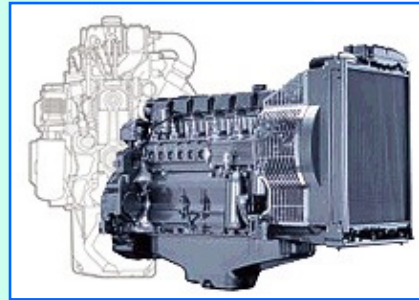
Electrical system

| | |
|-----------------------|----------------------|
| Electric circuit | 12 V |
| Battery (ACP) | 1 x 70 Ah |
| Starting motor | 3 kW |
| Autonomy (open) | 18,8 h (at 75% load) |
| Autonomy (soundproof) | 21,6 h (at 75% load) |

Alternator

| | |
|--------------------|-----------------------|
| Manufacturer | Stamford |
| Model | BCI 184 F |
| Efficiency at ¾ | 85,8 % |
| Power at 27 °C | 29 / 23 kVA/kW |
| Insulation | CLASS H |
| Protection | IP 23 |
| Power factor cos φ | 0,8 |
| Regulator | electr. SX460 +/-1,5% |

| | |
|----------------------------|------------------------|
| Combustion air flow at PRP | 117 m ³ /h |
| Cooling air flow rate | 1800 m ³ /h |
| Exhaust gas flow at PRP | 314 m ³ /h |
| Exhaust gas temp. at LTP | 600 °C |
| Max. exhaust back pressure | 30 mbar |



General data

| | |
|----------------------------|--------------------|
| Dimension (open) | 1800x750x1570 |
| Dimension (soundproof) | 2225x1100x1290 |
| Weight (open/soundproof) | 714 / 992 kg |
| Sound power level (LWA) | 92 dB(A) |
| Sound pressure level at 7m | 67 dB(A) |
| Fuel tank capacity | 90 l (open) |
| Fuel tank capacity | 120 l (soundproof) |

ESE 40 DL

ESE 40 DL/AS/MS

ENDRESS  [®]
Wir machen Strom

Genset

| | |
|-----------------------|----------------|
| Prime power [PRP] | 39 / 31 kVA/kW |
| Emergency power [LTP] | 41 / 33 kVA/kW |
| Frequency | 50 Hz |
| Voltage | 400/230 V |

Engine type

| | |
|--------------------------|----------------------|
| Manufacturer | DEUTZ |
| Model | BF4M 2011 |
| Prime power | 36,4 kW |
| Speed | 1500 rpm |
| Cooling system | Oil |
| Intake | Turbo |
| Cylinders | 4 in line |
| Displacement | 3110 cm ³ |
| Standard governor | mechanical |
| Lubricating oil capacity | 10 l |
| Coolant capacity | - |

Fuel/Lube consumption

| | |
|------------------------|---------|
| at 75 % load | 7,1 l/h |
| at 100 % load | 9,4 l/h |
| Lube oil at PRP (max.) | 0,5 % |

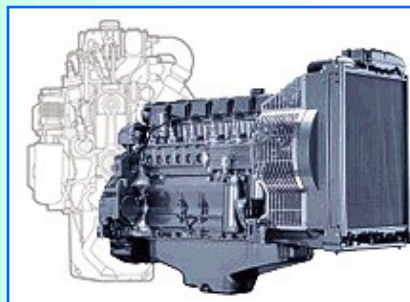
Electrical system

| | |
|-----------------------|----------------------|
| Electric circuit | 12 V |
| Battery (ACP) | 1 x 70 Ah |
| Starting motor | 3 kW |
| Autonomy (open) | 14,2 h (at 75% load) |
| Autonomy (soundproof) | 16,3 h (at 75% load) |

Alternator

| | |
|--------------------|-----------------------|
| Manufacturer | Stamford |
| Model | BCI 184 J |
| Efficiency at ¾ | 86,6 % |
| Power at 27 °C | 44 / 35 kVA/kW |
| Insulation | CLASS H |
| Protection | IP 23 |
| Power factor cos φ | 0,8 |
| Regulator | electr. SX460 +/-1,5% |

| | |
|----------------------------|------------------------|
| Combustion air flow at PRP | 151 m ³ /h |
| Cooling air flow rate | 2370 m ³ /h |
| Exhaust gas flow at PRP | 432 m ³ /h |
| Exhaust gas temp. at LTP | 610 °C |
| Max. exhaust back pressure | 30 mbar |



General data

| | |
|----------------------------|--------------------|
| Dimension (open) | 1800x750x1570 |
| Dimension (soundproof) | 2225x1100x1290 |
| Weight (open/soundproof) | 761 / 1064 kg |
| Sound power level (LWA) | 92 dB(A) |
| Sound pressure level at 7m | 67 dB(A) |
| Fuel tank capacity | 90 l (open) |
| Fuel tank capacity | 120 l (soundproof) |

ESE 60 DW

ESE 60 DW/AS/MS

ENDRESS

Wir machen Strom

Genset

| | |
|-----------------------|----------------|
| Prime power [PRP] | 58 / 46 kVA/kW |
| Emergency power [LTP] | 63 / 50 kVA/kW |
| Frequency | 50 Hz |
| Voltage | 400/230 V |

Engine type

| | |
|--------------------------|----------------------|
| Manufacturer | DEUTZ |
| Model | BF4M 2012 G2 |
| Prime power | 52 kW |
| Speed | 1500 rpm |
| Cooling system | Water |
| Intake | Turbo |
| Cylinders | 4 in line |
| Displacement | 4040 cm ³ |
| Standard governor | mechanical |
| Lubricating oil capacity | 8,5 l |
| Coolant capacity | 17,9 l |

Fuel/Lube consumption

| | |
|------------------------|----------|
| at 75 % load | 10,3 l/h |
| at 100 % load | 13,7 l/h |
| Lube oil at PRP (max.) | 0,3 % |

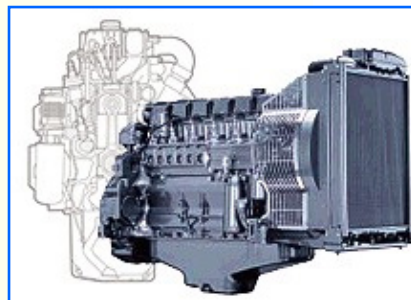
Electrical system

| | |
|-----------------------|----------------------|
| Electric circuit | 12 V |
| Battery (ACP) | 1 x 95 Ah |
| Starting motor | 3 kW |
| Autonomy (open) | 23,4 h (at 75% load) |
| Autonomy (soundproof) | 33,1 h (at 75% load) |

Alternator

| | |
|--------------------|-----------------------|
| Manufacturer | Stamford |
| Model | UCI 224 E |
| Efficiency at ¾ | 88,8 % |
| Power at 27 °C | 61 / 50 kVA/kW |
| Insulation | CLASS H |
| Protection | IP 23 |
| Power factor cos φ | 0,8 |
| Regulator | electr. SX460 +/-1,5% |

| | |
|----------------------------|------------------------|
| Combustion air flow at PRP | 200 m ³ /h |
| Cooling air flow rate | 6480 m ³ /h |
| Exhaust gas flow at PRP | 607 m ³ /h |
| Exhaust gas temp. at LTP | 575 °C |
| Max. exhaust back pressure | 30 mbar |



STAMFORD
power generation



General data

| | |
|----------------------------|--------------------|
| Dimension (open) | 2200x1000x1620 |
| Dimension (soundproof) | 2710x1180x1730 |
| Weight (open/soundproof) | 865 / 1507 kg |
| Sound power level (LWA) | 95 dB(A) |
| Sound pressure level at 7m | 70 dB(A) |
| Fuel tank capacity | 240 l (open) |
| Fuel tank capacity | 320 l (soundproof) |

ESE 75 DW

ESE 75 DW/AS/MS

ENDRESS

Wir machen Strom

Genset

| | |
|-----------------------|----------------|
| Prime power [PRP] | 74 / 59 kVA/kW |
| Emergency power [LTP] | 78 / 63 kVA/kW |
| Frequency | 50 Hz |
| Voltage | 400/230 V |

Engine type

| | |
|--------------------------|----------------------|
| Manufacturer | DEUTZ |
| Model | BF4M 2012 C |
| Prime power | 66,1 kW |
| Speed | 1500 rpm |
| Cooling system | Water |
| Intake | Turbo |
| Cylinders | 4 in line |
| Displacement | 4040 cm ³ |
| Standard governor | mechanical |
| Lubricating oil capacity | 8,5 l |
| Coolant capacity | 17,9 l |

Fuel/Lube consumption

| | |
|------------------------|----------|
| at 75 % load | 11,7 l/h |
| at 100 % load | 15,7 l/h |
| Lube oil at PRP (max.) | 0,3 % |

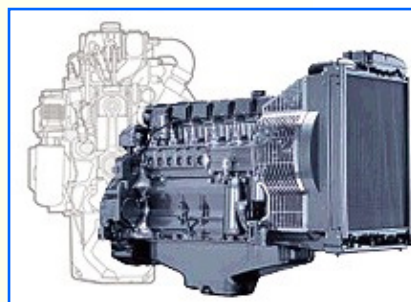
Electrical system

| | |
|-----------------------|----------------------|
| Electric circuit | 12 V |
| Battery (ACP) | 1 x 95 Ah |
| Starting motor | 3 kW |
| Autonomy (open) | 20,4 h (at 75% load) |
| Autonomy (soundproof) | 28,9 h (at 75% load) |

Alternator

| | |
|--------------------|-----------------------|
| Manufacturer | Stamford |
| Model | UCI 224 F |
| Efficiency at ¾ | 89,9 % |
| Power at 27 °C | 77 / 62 kVA/kW |
| Insulation | CLASS H |
| Protection | IP 23 |
| Power factor cos φ | 0,8 |
| Regulator | electr. SX460 +/-1,5% |

| | |
|----------------------------|------------------------|
| Combustion air flow at PRP | 240 m ³ /h |
| Cooling air flow rate | 5760 m ³ /h |
| Exhaust gas flow at PRP | 677 m ³ /h |
| Exhaust gas temp. at LTP | 535 °C |
| Max. exhaust back pressure | 30 mbar |



General data

| | |
|----------------------------|--------------------|
| Dimension (open) | 2200x1000x1620 |
| Dimension (soundproof) | 2710x1180x1730 |
| Weight (open/soundproof) | 945 / 1525 kg |
| Sound power level (LWA) | 97 dB(A) |
| Sound pressure level at 7m | 72 dB(A) |
| Fuel tank capacity | 240 l (open) |
| Fuel tank capacity | 320 l (soundproof) |

ESE 105 DW

ESE 105 DW/AS/MS

Genset

| | |
|-----------------------|-----------------|
| Prime power [PRP] | 102 / 82 kVA/kW |
| Emergency power [LTP] | 108 / 86 kVA/kW |
| Frequency | 50 Hz |
| Voltage | 400/230 V |

Engine type

| | |
|--------------------------|----------------------|
| Manufacturer | DEUTZ |
| Model | BF4M 1013 EC |
| Prime power | 91,1 kW |
| Speed | 1500 rpm |
| Cooling system | Water |
| Intake | Turbo |
| Cylinders | 4 in line |
| Displacement | 4760 cm ³ |
| Standard governor | mechanical |
| Lubricating oil capacity | 11 l |
| Coolant capacity | 19 l |

Fuel/Lube consumption

| | |
|------------------------|----------|
| at 75 % load | 16,7 l/h |
| at 100 % load | 22,2 l/h |
| Lube oil at PRP (max.) | 0,3 % |

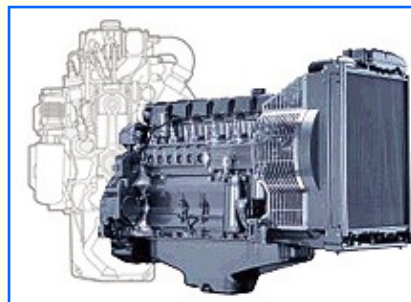
Electrical system

| | |
|-----------------------|----------------------|
| Electric circuit | 12 V |
| Battery (ACP) | 1 x 145 Ah |
| Starting motor | 3,1 kW |
| Autonomy (open) | 14,4 h (at 75% load) |
| Autonomy (soundproof) | 20,4 h (at 75% load) |

Alternator

| | |
|--------------------|-----------------------|
| Manufacturer | Stamford |
| Model | UCI 274 C |
| Efficiency at ¾ | 90,3 % |
| Power at 27 °C | 106 / 85 kVA/kW |
| Insulation | CLASS H |
| Protection | IP 23 |
| Power factor cos φ | 0,8 |
| Regulator | electr. SX460 +/-1,5% |

| | |
|----------------------------|------------------------|
| Combustion air flow at PRP | 377 m ³ /h |
| Cooling air flow rate | 6120 m ³ /h |
| Exhaust gas flow at PRP | 1048 m ³ /h |
| Exhaust gas temp. at LTP | 545 °C |
| Max. exhaust back pressure | 30 mbar |

**General data**

| | |
|----------------------------|--------------------|
| Dimension (open) | 2200x1000x1620 |
| Dimension (soundproof) | 3000x1150x1730 |
| Weight (open/soundproof) | 1326 / 2100 kg |
| Sound power level (LWA) | 96 dB(A) |
| Sound pressure level at 7m | 71 dB(A) |
| Fuel tank capacity | 240 l (open) |
| Fuel tank capacity | 320 l (soundproof) |

ESE 135 DW

ESE 135 DW/AS/MS

Genset

| | |
|-----------------------|------------------|
| Prime power [PRP] | 135 / 108 kVA/kW |
| Emergency power [LTP] | 142 / 113 kVA/kW |
| Frequency | 50 Hz |
| Voltage | 400/230 V |

Engine type

| | |
|--------------------------|----------------------|
| Manufacturer | DEUTZ |
| Model | BF6M 1013 E |
| Prime power | 117,8 kW |
| Speed | 1500 rpm |
| Cooling system | Water |
| Intake | Turbo |
| Cylinders | 6 in line |
| Displacement | 7150 cm ³ |
| Standard governor | mechanical |
| Lubricating oil capacity | 20 l |
| Coolant capacity | 15 l |

Fuel/Lube consumption

| | |
|------------------------|----------|
| at 75 % load | 21,9 l/h |
| at 100 % load | 29,2 l/h |
| Lube oil at PRP (max.) | 0,3 % |

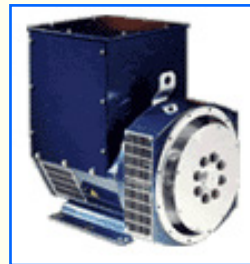
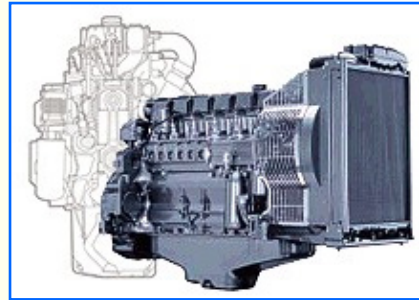
Electrical system

| | |
|-----------------------|----------------------|
| Electric circuit | 12 V |
| Battery (ACP) | 1 x 145 Ah |
| Starting motor | 3,1 kW |
| Autonomy (open) | 10,4 h (at 75% load) |
| Autonomy (soundproof) | 15,5 h (at 75% load) |

Alternator

| | |
|--------------------|-----------------------|
| Manufacturer | Stamford |
| Model | UCI 274 E |
| Efficiency at ¾ | 91,7 % |
| Power at 27 °C | 145 / 116 kVA/kW |
| Insulation | CLASS H |
| Protection | IP 23 |
| Power factor cos φ | 0,8 |
| Regulator | electr. SX460 +/-1,5% |

| | |
|----------------------------|------------------------|
| Combustion air flow at PRP | 484 m ³ /h |
| Cooling air flow rate | 9000 m ³ /h |
| Exhaust gas flow at PRP | 1454 m ³ /h |
| Exhaust gas temp. at LTP | 575 °C |
| Max. exhaust back pressure | 30 mbar |

**General data**

| | |
|----------------------------|--------------------|
| Dimension (open) | 2600x1000x1620 |
| Dimension (soundproof) | 3500x1250x1910 |
| Weight (open/soundproof) | 1545 / 2530 kg |
| Sound power level (LWA) | 97 dB(A) |
| Sound pressure level at 7m | 72 dB(A) |
| Fuel tank capacity | 240 l (open) |
| Fuel tank capacity | 320 l (soundproof) |

ESE 160 DW ESE 160 DW/AS

Genset

| | |
|-----------------------|------------------|
| Prime power [PRP] | 159 / 127 kVA/kW |
| Emergency power [LTP] | 167 / 134 kVA/kW |
| Frequency | 50 Hz |
| Voltage | 400/230 V |

Engine type

| | |
|--------------------------|----------------------|
| Manufacturer | DEUTZ |
| Model | BF6M 1013 EC |
| Prime power | 138,1 kW |
| Speed | 1500 rpm |
| Cooling system | Water |
| Intake | Turbo intercooler |
| Cylinders | 6 in line |
| Displacement | 7150 cm ³ |
| Standard governor | mechanical |
| Lubricating oil capacity | 11 l |
| Coolant capacity | 17,2 l |

Fuel/Lube consumption

| | |
|------------------------|----------|
| at 75 % load | 24,5 l/h |
| at 100 % load | 32,7 l/h |
| Lube oil at PRP (max.) | 0,3 % |

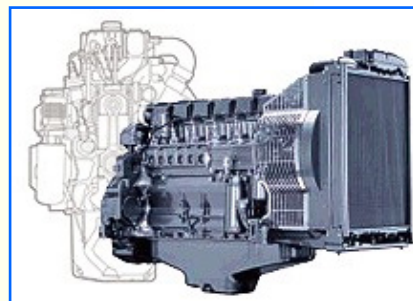
Electrical system

| | |
|-----------------------|----------------------|
| Electric circuit | 12 V |
| Battery (ACP) | 1 x 145 Ah |
| Starting motor | 3,1 kW |
| Autonomy (open) | 9,8 h (at 75% load) |
| Autonomy (soundproof) | 13,9 h (at 75% load) |

Alternator

| | |
|--------------------|-----------------------|
| Manufacturer | Stamford |
| Model | UCI 274 F |
| Efficiency at ¾ | 92,3 % |
| Power at 27 °C | 170 / 136 kVA/kW |
| Insulation | CLASS H |
| Protection | IP 23 |
| Power factor cos φ | 0,8 |
| Regulator | electr. SX460 +/-1,5% |

| | |
|----------------------------|-------------------------|
| Combustion air flow at PRP | 607 m ³ /h |
| Cooling air flow rate | 10800 m ³ /h |
| Exhaust gas flow at PRP | 1602 m ³ /h |
| Exhaust gas temp. at LTP | 500 °C |
| Max. exhaust back pressure | 50 mbar |



General data

| | |
|----------------------------|--------------------|
| Dimension (open) | 2600x1000x1620 |
| Dimension (soundproof) | 3500x1250x1910 |
| Weight (open/soundproof) | 1650 / 2600 kg |
| Sound power level (LWA) | 99 dB(A) |
| Sound pressure level at 7m | 74 dB(A) |
| Fuel tank capacity | 240 l (open) |
| Fuel tank capacity | 320 l (soundproof) |

ESE 315 DW

ESE 315 DW/AS

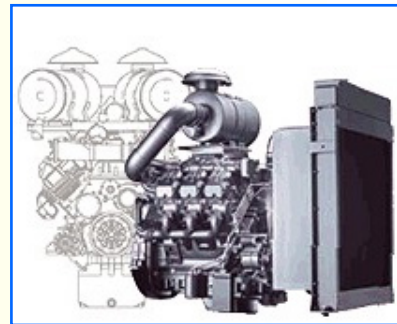


Genset

| | |
|-----------------------|------------------|
| Prime power [PRP] | 314 / 251 kVA/kW |
| Emergency power [LTP] | 330 / 264 kVA/kW |
| Frequency | 50 Hz |
| Voltage | 400/230 V |

Engine type

| | |
|--------------------------|-----------------------|
| Manufacturer | DEUTZ |
| Model | BF6M 1015 C G1 |
| Prime power | 271,2 kW |
| Speed | 1500 rpm |
| Cooling system | Water |
| Intake | Turbo intercooler |
| Cylinders | 6 V |
| Displacement | 11900 cm ³ |
| Standard governor | electronic |
| Lubricating oil capacity | 34 l |
| Coolant capacity | 17 l |



Fuel/Lube consumption

| | |
|------------------------|----------|
| at 75 % load | 48,9 l/h |
| at 100 % load | 65,2 l/h |
| Lube oil at PRP (max.) | 0,3 % |



Electrical system

| | |
|-----------------------|----------------------|
| Electric circuit | 24 V |
| Battery (ACP) | 2 x 145 Ah |
| Starting motor | 5,4 kW |
| Autonomy (open) | 8,9 h (at 75% load) |
| Autonomy (soundproof) | 12,5 h (at 75% load) |

Alternator

| | |
|--------------------|-----------------------|
| Manufacturer | Stamford |
| Model | HCI 444 E |
| Efficiency at ¾ | 93,0 % |
| Power at 27 °C | 320 / 256 kVA/kW |
| Insulation | CLASS H |
| Protection | IP 23 |
| Power factor cos φ | 0,8 |
| Regulator | electr. SX440 +/-1,5% |

| | |
|----------------------------|-------------------------|
| Combustion air flow at PRP | 1170 m ³ /h |
| Cooling air flow rate | 20952 m ³ /h |
| Exhaust gas flow at PRP | 3265 m ³ /h |
| Exhaust gas temp. at LTP | 510 °C |
| Max. exhaust back pressure | 50 mbar |



General data

| | |
|----------------------------|--------------------|
| Dimension (open) | 3000x1400x1950 |
| Dimension (soundproof) | 4000x1800x2250 |
| Weight (open/soundproof) | 2600 / 3800 kg |
| Sound power level (LWA) | 99 dB(A) |
| Sound pressure level at 7m | 74 dB(A) |
| Fuel tank capacity | 440 l (open) |
| Fuel tank capacity | 480 l (soundproof) |

ESE 380 DW

ESE 380 DW/AS

Genset

| | |
|-----------------------|------------------|
| Prime power [PRP] | 381 / 305 kVA/kW |
| Emergency power [LTP] | 412 / 330 kVA/kW |
| Frequency | 50 Hz |
| Voltage | 400/230 V |

Engine type

| | |
|--------------------------|-----------------------|
| Manufacturer | DEUTZ |
| Model | BF6M 1015 CP |
| Prime power | 327,3 kW |
| Speed | 1500 rpm |
| Cooling system | Water |
| Intake | Turbo intercooler |
| Cylinders | 6 V |
| Displacement | 11900 cm ³ |
| Standard governor | electronic |
| Lubricating oil capacity | 34 l |
| Coolant capacity | 17 l |

Fuel/Lube consumption

| | |
|------------------------|----------|
| at 75 % load | 60,8 l/h |
| at 100 % load | 81,0 l/h |
| Lube oil at PRP (max.) | 0,3 % |

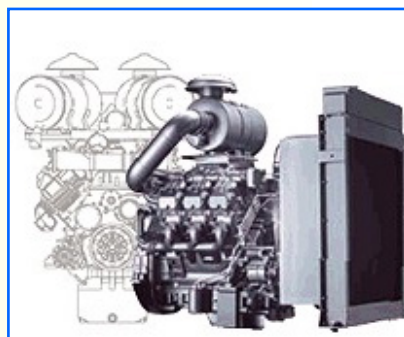
Electrical system

| | |
|-----------------------|----------------------|
| Electric circuit | 24 V |
| Battery (ACP) | 2 x 145 Ah |
| Starting motor | 5,4 kW |
| Autonomy (open) | 11,7 h (at 75% load) |
| Autonomy (soundproof) | 7,6 h (at 75% load) |

Alternator

| | |
|--------------------|-----------------------|
| Manufacturer | Stamford |
| Model | HCKI 444 F |
| Efficiency at ¾ | 93,4 % |
| Power at 27 °C | 427 / 342 kVA/kW |
| Insulation | CLASS H |
| Protection | IP 23 |
| Power factor cos φ | 0,8 |
| Regulator | electr. SX440 +/-1,5% |

| | |
|----------------------------|-------------------------|
| Combustion air flow at PRP | 1386 m ³ /h |
| Cooling air flow rate | 24120 m ³ /h |
| Exhaust gas flow at PRP | 3990 m ³ /h |
| Exhaust gas temp. at LTP | 555 °C |
| Max. exhaust back pressure | 50 mbar |



General data

| | |
|----------------------------|--------------------|
| Dimension (open) | 3000x1600x2160 |
| Dimension (soundproof) | 4000x1800x2250 |
| Weight (open/soundproof) | 2800 / 4000 kg |
| Sound power level (LWA) | 99 dB(A) |
| Sound pressure level at 7m | 74 dB(A) |
| Fuel tank capacity | 730 l (open) |
| Fuel tank capacity | 480 l (soundproof) |

ESE 460 DW

ESE 460 DW/AS

Genset

| | |
|-----------------------|------------------|
| Prime power [PRP] | 460 / 368 kVA/kW |
| Emergency power [LTP] | 529 / 423 kVA/kW |
| Frequency | 50 Hz |
| Voltage | 400/230 V |

Engine type

| | |
|--------------------------|-----------------------|
| Manufacturer | DEUTZ |
| Model | BF8M 1015 C G2 |
| Prime power | 391,3 kW |
| Speed | 1500 rpm |
| Cooling system | Water |
| Intake | Turbo intercooler |
| Cylinders | 8 V |
| Displacement | 15900 cm ³ |
| Standard governor | electronic |
| Lubricating oil capacity | 45 l |
| Coolant capacity | 21 l |

Fuel/Lube consumption

| | |
|------------------------|----------|
| at 75 % load | 70,9 l/h |
| at 100 % load | 94,6 l/h |
| Lube oil at PRP (max.) | 0,3 % |

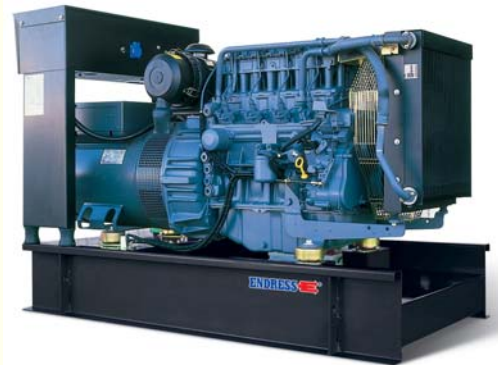
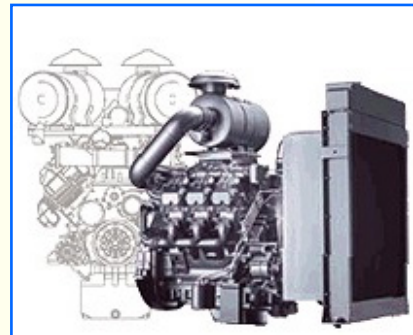
Electrical system

| | |
|-----------------------|----------------------|
| Electric circuit | 24 V |
| Battery (ACP) | 2 x 145 Ah |
| Starting motor | 5,4 kW |
| Autonomy (open) | 10,9 h (at 75% load) |
| Autonomy (soundproof) | 10,5 h (at 75% load) |

Alternator

| | |
|--------------------|-----------------------|
| Manufacturer | Stamford |
| Model | HCI 544 D |
| Efficiency at ¾ | 94,3 % |
| Power at 27 °C | 575 / 460 kVA/kW |
| Insulation | CLASS H |
| Protection | IP 23 |
| Power factor cos φ | 0,8 |
| Regulator | electr. SX440 +/-1,5% |

| | |
|----------------------------|-------------------------|
| Combustion air flow at PRP | 2092 m ³ /h |
| Cooling air flow rate | 24120 m ³ /h |
| Exhaust gas flow at PRP | 4765 m ³ /h |
| Exhaust gas temp. at LTP | 540 °C |
| Max. exhaust back pressure | 50 mbar |



General data

| | |
|----------------------------|--------------------|
| Dimension (open) | 3200x1600x2185 |
| Dimension (soundproof) | 4000x2000x2250 |
| Weight (open/soundproof) | 3730 / 4975 kg |
| Sound power level (LWA) | 100 dB(A) |
| Sound pressure level at 7m | 75 dB(A) |
| Fuel tank capacity | 720 l (open) |
| Fuel tank capacity | 750 l (soundproof) |

ESE 505 DW

ESE 505 DW/AS

Genset

| | |
|-----------------------|------------------|
| Prime power [PRP] | 510 / 408 kVA/kW |
| Emergency power [LTP] | 560 / 448 kVA/kW |
| Frequency | 50 Hz |
| Voltage | 400/230 V |

Engine type

| | |
|--------------------------|-----------------------|
| Manufacturer | DEUTZ |
| Model | BF8M 1015 CP |
| Prime power | 433,9 kW |
| Speed | 1500 rpm |
| Cooling system | Water |
| Intake | Turbo intercooler |
| Cylinders | 8 V |
| Displacement | 15900 cm ³ |
| Standard governor | electronic |
| Lubricating oil capacity | 45 l |
| Coolant capacity | 21 l |

Fuel/Lube consumption

| | |
|------------------------|-----------|
| at 75 % load | 81,7 l/h |
| at 100 % load | 109,0 l/h |
| Lube oil at PRP (max.) | 0,3 % |

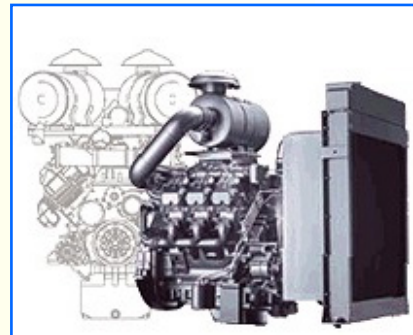
Electrical system

| | |
|-----------------------|---------------------|
| Electric circuit | 24 V |
| Battery (ACP) | 2 x 145 Ah |
| Starting motor | 5,4 kW |
| Autonomy (open) | 8,9 h (at 75% load) |
| Autonomy (soundproof) | 9,1 h (at 75% load) |

Alternator

| | |
|--------------------|-----------------------|
| Manufacturer | Stamford |
| Model | HCI 544 D |
| Efficiency at ¾ | 94,3 % |
| Power at 27 °C | 575 / 460 kVA/kW |
| Insulation | CLASS H |
| Protection | IP 23 |
| Power factor cos φ | 0,8 |
| Regulator | electr. SX440 +/-1,5% |

| | |
|----------------------------|-------------------------|
| Combustion air flow at PRP | 1848 m ³ /h |
| Cooling air flow rate | 33120 m ³ /h |
| Exhaust gas flow at PRP | 5377 m ³ /h |
| Exhaust gas temp. at LTP | 600 °C |
| Max. exhaust back pressure | 50 mbar |



General data

| | |
|----------------------------|--------------------|
| Dimension (open) | 3200x1600x2200 |
| Dimension (soundproof) | 4000x2000x2250 |
| Weight (open/soundproof) | 3780 / 2025 kg |
| Sound power level (LWA) | 100 dB(A) |
| Sound pressure level at 7m | 75 dB(A) |
| Fuel tank capacity | 720 l (open) |
| Fuel tank capacity | 750 l (soundproof) |

ESE 185 VW

ESE 185 VW/AS

Genset

| | |
|-----------------------|------------------|
| Prime power [PRP] | 187 / 149 kVA/kW |
| Emergency power [LTP] | 194 / 155 kVA/kW |
| Frequency | 50 Hz |
| Voltage | 400/230 V |

Engine type

| | |
|--------------------------|----------------------|
| Manufacturer | VOLVO |
| Model | TAD 721GE |
| Prime power | 162 kW |
| Speed | 1500 rpm |
| Cooling system | Water |
| Intake | Turbo intercooler |
| Cylinders | 6 in line |
| Displacement | 7150 cm ³ |
| Standard governor | electronic |
| Lubricating oil capacity | 34 l |
| Coolant capacity | 24 l |

Fuel/Lube consumption

| | |
|------------------------|-----------|
| at 75 % load | 29,51 l/h |
| at 100 % load | 39,34 l/h |
| Lube oil at PRP (max.) | 0,2 % |

Electrical system

| | |
|-----------------------|----------------------|
| Electric circuit | 24 V |
| Battery (ACP) | 2 x 145 Ah |
| Starting motor | 3,1 kW |
| Autonomy (open) | 13,9 h (at 75% load) |
| Autonomy (soundproof) | 11,2 h (at 75% load) |

Alternator

| | |
|--------------------|-----------------------|
| Manufacturer | Stamford |
| Model | UCI 274 G |
| Efficiency at ¾ | 92,4 % |
| Power at 27 °C | 187 / 150 kVA/kW |
| Insulation | CLASS H |
| Protection | IP 23 |
| Power factor cos φ | 0,8 |
| Regulator | electr. SX440 +/-1,5% |

| | |
|----------------------------|------------------------|
| Combustion air flow at PRP | 654 m ³ /h |
| Cooling air flow rate | 7560 m ³ /h |
| Exhaust gas flow at PRP | 1866 m ³ /h |
| Exhaust gas temp. at LTP | 540 °C |
| Max. exhaust back pressure | 35 mbar |

**VOLVO
PENTA****STAMFORD**
power generation**General data**

| | |
|----------------------------|--------------------|
| Dimension (open) | 2650x1100x1850 |
| Dimension (soundproof) | 3500x1300x2150 |
| Weight (open/soundproof) | 1980 / 2950 kg |
| Sound power level (LWA) | 95 dB(A) |
| Sound pressure level at 7m | 70 dB(A) |
| Fuel tank capacity | 410 l (open) |
| Fuel tank capacity | 330 l (soundproof) |

ESE 200 VW

ESE 200 VW/AS

Genset

| | |
|-----------------------|------------------|
| Prime power [PRP] | 208 / 167 kVA/kW |
| Emergency power [LTP] | 220 / 176 kVA/kW |
| Frequency | 50 Hz |
| Voltage | 400/230 V |

Engine type

| | |
|--------------------------|----------------------|
| Manufacturer | VOLVO |
| Model | TAD 722 GE |
| Prime power | 179 kW |
| Speed | 1500 rpm |
| Cooling system | Water |
| Intake | Turbo intercooler |
| Cylinders | 6 in line |
| Displacement | 7150 cm ³ |
| Standard governor | electronic |
| Lubricating oil capacity | 34 l |
| Coolant capacity | 24 l |

Fuel/Lube consumption

| | |
|------------------------|-----------|
| at 75 % load | 32,44 l/h |
| at 100 % load | 43,26 l/h |
| Lube oil at PRP (max.) | 0,2 % |

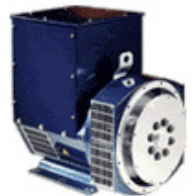
Electrical system

| | |
|-----------------------|----------------------|
| Electric circuit | 24 V |
| Battery (ACP) | 2 x 145 Ah |
| Starting motor | 3,1 kW |
| Autonomy (open) | 12,6 h (at 75% load) |
| Autonomy (soundproof) | 10,2 h (at 75% load) |

Alternator

| | |
|--------------------|-----------------------|
| Manufacturer | Stamford |
| Model | UCI 274 H |
| Efficiency at ¾ | 93,3 % |
| Power at 27 °C | 212 / 170 kVA/kW |
| Insulation | CLASS H |
| Protection | IP 23 |
| Power factor cos φ | 0,8 |
| Regulator | electr. SX440 +/-1,5% |

| | |
|----------------------------|------------------------|
| Combustion air flow at PRP | 708 m ³ /h |
| Cooling air flow rate | 7920 m ³ /h |
| Exhaust gas flow at PRP | 2034 m ³ /h |
| Exhaust gas temp. at LTP | 557 °C |
| Max. exhaust back pressure | 35 mbar |

**VOLVO
PENTA****STAMFORD**
power generation**General data**

| | |
|----------------------------|--------------------|
| Dimension (open) | 2650x1100x1850 |
| Dimension (soundproof) | 3500x1300x2150 |
| Weight (open/soundproof) | 2030 / 2775 kg |
| Sound power level (LWA) | 99 dB(A) |
| Sound pressure level at 7m | 74 dB(A) |
| Fuel tank capacity | 410 l (open) |
| Fuel tank capacity | 330 l (soundproof) |

ESE 250 VW

ESE 250 VW/AS

Genset

| | |
|-----------------------|------------------|
| Prime power [PRP] | 254 / 203 kVA/kW |
| Emergency power [LTP] | 275 / 220 kVA/kW |
| Frequency | 50 Hz |
| Voltage | 400/230 V |

Engine type

| | |
|--------------------------|----------------------|
| Manufacturer | VOLVO |
| Model | TAD 740 GE |
| Prime power | 220 kW |
| Speed | 1500 rpm |
| Cooling system | Water |
| Intake | Turbo intercooler |
| Cylinders | 6 in line |
| Displacement | 7280 cm ³ |
| Standard governor | electronic |
| Lubricating oil capacity | 29 l |
| Coolant capacity | 37 l |

Fuel/Lube consumption

| | |
|------------------------|-----------|
| at 75 % load | 38,89 l/h |
| at 100 % load | 51,86 l/h |
| Lube oil at PRP (max.) | 0,08 % |

Electrical system

| | |
|-----------------------|----------------------|
| Electric circuit | 24 V |
| Battery (ACP) | 2 x 145 Ah |
| Starting motor | 5,4 kW |
| Autonomy (open) | 11,3 h (at 75% load) |
| Autonomy (soundproof) | 11,3 h (at 75% load) |

Alternator

| | |
|--------------------|-----------------------|
| Manufacturer | Stamford |
| Model | UCDI 274 K |
| Efficiency at ¾ | 92,7 % |
| Power at 27 °C | 265 / 212 kVA/kW |
| Insulation | CLASS H |
| Protection | IP 23 |
| Power factor cos φ | 0,8 |
| Regulator | electr. SX440 +/-1,5% |

| | |
|----------------------------|------------------------|
| Combustion air flow at PRP | 882 m ³ /h |
| Cooling air flow rate | 9360 m ³ /h |
| Exhaust gas flow at PRP | 2352 m ³ /h |
| Exhaust gas temp. at LTP | 540 °C |
| Max. exhaust back pressure | 50 mbar |

**VOLVO
PENTA****STAMFORD**
power generation**General data**

| | |
|----------------------------|--------------------|
| Dimension (open) | 3000x1100x1850 |
| Dimension (soundproof) | 3500x1300x2150 |
| Weight (open/soundproof) | 2245 / 3320 kg |
| Sound power level (LWA) | 99 dB(A) |
| Sound pressure level at 7m | 74 dB(A) |
| Fuel tank capacity | 440 l (open) |
| Fuel tank capacity | 440 l (soundproof) |

ESE 325 VW

ESE 325 VW/AS

Genset

| | |
|-----------------------|------------------|
| Prime power [PRP] | 320 / 256 kVA/kW |
| Emergency power [LTP] | 330 / 264 kVA/kW |
| Frequency | 50 Hz |
| Voltage | 400/230 V |

Engine type

| | |
|--------------------------|----------------------|
| Manufacturer | VOLVO |
| Model | TAD 941GE |
| Prime power | 279 kW |
| Speed | 1500 rpm |
| Cooling system | Water |
| Intake | Turbo intercooler |
| Cylinders | 6 in line |
| Displacement | 9360 cm ³ |
| Standard governor | electronic |
| Lubricating oil capacity | 33 l |
| Coolant capacity | 36,9 l |

Fuel/Lube consumption

| | |
|------------------------|-----------|
| at 75 % load | 50,32 l/h |
| at 100 % load | 67,09 l/h |
| Lube oil at PRP (max.) | 0,1 % |

Electrical system

| | |
|-----------------------|----------------------|
| Electric circuit | 24 V |
| Battery (ACP) | 2 x 145 Ah |
| Starting motor | 5,5 kW |
| Autonomy (open) | 11,9 h (at 75% load) |
| Autonomy (soundproof) | 12,3 h (at 75% load) |

Alternator

| | |
|--------------------|-----------------------|
| Manufacturer | Stamford |
| Model | UCKI 444 D |
| Efficiency at ¾ | 93,0 % |
| Power at 27 °C | 320 / 256 kVA/kW |
| Insulation | CLASS H |
| Protection | IP 23 |
| Power factor cos φ | 0,8 |
| Regulator | electr. SX440 +/-1,5% |

| | |
|----------------------------|------------------------|
| Combustion air flow at PRP | 1062 m ³ /h |
| Cooling air flow rate | 1260 m ³ /h |
| Exhaust gas flow at PRP | 2790 m ³ /h |
| Exhaust gas temp. at LTP | 485 °C |
| Max. exhaust back pressure | 50 mbar |

**VOLVO
PENTA****STAMFORD**
power generation**General data**

| | |
|----------------------------|--------------------|
| Dimension (open) | 3000x1100x1900 |
| Dimension (soundproof) | 3500x1300x2150 |
| Weight (open/soundproof) | 2400 / 4000 kg |
| Sound power level (LWA) | 99 dB(A) |
| Sound pressure level at 7m | 74 dB(A) |
| Fuel tank capacity approx. | 600 l (open) |
| Fuel tank capacity approx. | 620 l (soundproof) |

ESE 375 VW

ESE 375 VW/AS

Genset

| | |
|-----------------------|------------------|
| Prime power [PRP] | 376 / 301 kVA/kW |
| Emergency power [LTP] | 412 / 330 kVA/kW |
| Frequency | 50 Hz |
| Voltage | 400/230 V |

Engine type

| | |
|--------------------------|-----------------------|
| Manufacturer | VOLVO |
| Model | TAD 1241 GE |
| Prime power | 323 kW |
| Speed | 1500 rpm |
| Cooling system | Water |
| Intake | Turbo intercooler |
| Cylinders | 6 in line |
| Displacement | 12130 cm ³ |
| Standard governor | electronic |
| Lubricating oil capacity | 35 l |
| Coolant capacity | 48 l |

Fuel/Lube consumption

| | |
|------------------------|-----------|
| at 75 % load | 57,10 l/h |
| at 100 % load | 76,14 l/h |
| Lube oil at PRP (max.) | 0,15 % |

Electrical system

| | |
|-----------------------|----------------------|
| Electric circuit | 24 V |
| Battery (ACP) | 2 x 145 Ah |
| Starting motor | 6,0 kW |
| Autonomy (open) | 9,2 h (at 75% load) |
| Autonomy (soundproof) | 10,8 h (at 75% load) |

Alternator

| | |
|--------------------|-----------------------|
| Manufacturer | Stamford |
| Model | UCKI 444 F |
| Efficiency at ¾ | 93,4 % |
| Power at 27 °C | 427 / 342 kVA/kW |
| Insulation | CLASS H |
| Protection | IP 23 |
| Power factor cos φ | 0,8 |
| Regulator | electr. SX440 +/-1,5% |

| | |
|----------------------------|-------------------------|
| Combustion air flow at PRP | 1410 m ³ /h |
| Cooling air flow rate | 13680 m ³ /h |
| Exhaust gas flow at PRP | 3480 m ³ /h |
| Exhaust gas temp. at LTP | 505 °C |
| Max. exhaust back pressure | 50 mbar |

**VOLVO
PENTA****STAMFORD**
power generation**General data**

| | |
|----------------------------|--------------------|
| Dimension (open) | 3000x1100x1900 |
| Dimension (soundproof) | 3500x1300x2150 |
| Weight (open/soundproof) | 2400 / 4000 kg |
| Sound power level (LWA) | 99 dB(A) |
| Sound pressure level at 7m | 74 dB(A) |
| Fuel tank capacity | 525 l (open) |
| Fuel tank capacity | 620 l (soundproof) |

ESE 400 VW

ESE 400 VW/AS

Genset

| | |
|-----------------------|------------------|
| Prime power [PRP] | 410 / 328 kVA/kW |
| Emergency power [LTP] | 440 / 352 kVA/kW |
| Frequency | 50 Hz |
| Voltage | 400/230 V |

Engine type

| | |
|--------------------------|-----------------------|
| Manufacturer | VOLVO |
| Model | TAD 1242 GE |
| Prime power | 352 kW |
| Speed | 1500 rpm |
| Cooling system | Water |
| Intake | Turbo intercooler |
| Cylinders | 6 in line |
| Displacement | 12130 cm ³ |
| Standard governor | electronic |
| Lubricating oil capacity | 35 l |
| Coolant capacity | 48 l |

Fuel/Lube consumption

| | |
|------------------------|----------------------|
| at 75 % load | 61 l/h |
| at 100 % load | 81 l/h |
| Autonomy (open) | 8,6 h (at 75% load) |
| Autonomy (soundproof) | 10,2 h (at 75% load) |
| Lube oil at PRP (max.) | 0,14 % |

Electrical system

| | |
|------------------|------------|
| Electric circuit | 24 V |
| Battery (ACP) | 2 x 145 Ah |
| Starting motor | 6,0 kW |

Alternator

| | |
|--------------------|-----------------------|
| Manufacturer | Stamford |
| Model | HCKI 444 F |
| Efficiency at ¾ | 93,4 % |
| Power at 27 °C | 427 / 342 kVA/kW |
| Insulation | CLASS H |
| Protection | IP 23 |
| Power factor cos φ | 0,8 |
| Regulator | electr. SX440 +/-1,0% |

| | |
|----------------------------|-------------------------|
| Combustion air flow at PRP | 1500 m ³ /h |
| Cooling air flow rate | 16200 m ³ /h |
| Exhaust gas flow at PRP | 3780 m ³ /h |
| Exhaust gas temp. at LTP | 525 °C |
| Max. exhaust back pressure | 50 mbar |

**VOLVO
PENTA****STAMFORD**
power generation**General data**

| | |
|----------------------------|--------------------|
| Dimension (open) | 3200x1100x1960 |
| Dimension (soundproof) | 4000x1600x2250 |
| Weight (open/soundproof) | 3100 / 4200 kg |
| Sound power level (LWA) | 100 dB(A) |
| Sound pressure level at 7m | 75 dB(A) |
| Fuel tank capacity approx. | 525 l (open) |
| Fuel tank capacity approx. | 620 l (soundproof) |

ESE 450 VW

ESE 450 VW/AS

Genset

| | |
|-----------------------|------------------|
| Prime power [PRP] | 462 / 370 kVA/kW |
| Emergency power [LTP] | 508 / 407 kVA/kW |
| Frequency | 50 Hz |
| Voltage | 400/230 V |

Engine type

| | |
|--------------------------|-----------------------|
| Manufacturer | VOLVO |
| Model | TAD 1640 GE |
| Prime power | 393 kW |
| Speed | 1500 rpm |
| Cooling system | Water |
| Intake | Turbo intercooler |
| Cylinders | 6 in line |
| Displacement | 16120 cm ³ |
| Standard governor | electronic |
| Lubricating oil capacity | 48 l |
| Coolant capacity | 56 l |

Fuel/Lube consumption

| | |
|------------------------|----------------------|
| at 75 % load | 68 l/h |
| at 100 % load | 91 l/h |
| Autonomy (open) | 10,9 h (at 75% load) |
| Autonomy (soundproof) | 12,2 h (at 75% load) |
| Lube oil at PRP (max.) | 0,11 % |

Electrical system

| | |
|------------------|------------|
| Electric circuit | 24 V |
| Battery (ACP) | 2 x 145 Ah |
| Starting motor | 6,0 kW |

Alternator

| | |
|--------------------|-----------------------|
| Manufacturer | Stamford |
| Model | HCI 544 D |
| Efficiency at ¾ | 94,3 % |
| Power at 27 °C | 575 / 460 kVA/kW |
| Insulation | CLASS H |
| Protection | IP 23 |
| Power factor cos φ | 0,8 |
| Regulator | electr. SX440 +/-1,0% |

| | |
|----------------------------|-------------------------|
| Combustion air flow at PRP | 1800 m ³ /h |
| Cooling air flow rate | 19980 m ³ /h |
| Exhaust gas flow at PRP | 4320 m ³ /h |
| Exhaust gas temp. at LTP | 455 °C |
| Max. exhaust back pressure | 50 mbar |

**VOLVO
PENTA****STAMFORD**
power generation**General data**

| | |
|----------------------------|--------------------|
| Dimension (open) | 3500x1300x2080 |
| Dimension (soundproof) | 5000x1800x2250 |
| Weight (open/soundproof) | 3470 / 5250 kg |
| Sound power level (LWA) | 100 dB(A) |
| Sound pressure level at 7m | 75 dB(A) |
| Fuel tank capacity approx. | 730 l (open) |
| Fuel tank capacity approx. | 730 l (soundproof) |

ESE 500 VW ESE 500 VW/AS

Genset

| | |
|-----------------------|------------------|
| Prime power [PRP] | 506 / 405 kVA/kW |
| Emergency power [LTP] | 556 / 445 kVA/kW |
| Frequency | 50 Hz |
| Voltage | 400/230 V |

Engine type

| | |
|--------------------------|-----------------------|
| Manufacturer | VOLVO |
| Model | TAD 1641 GE |
| Prime power | 430 kW |
| Speed | 1500 rpm |
| Cooling system | Water |
| Intake | Turbo intercooler |
| Cylinders | 6 in line |
| Displacement | 16120 cm ³ |
| Standard governor | electronic |
| Lubricating oil capacity | 48 l |
| Coolant capacity | 56 l |

Fuel/Lube consumption

| | |
|------------------------|---------------------|
| at 75 % load | 76 l/h |
| at 100 % load | 101 l/h |
| Autonomy (open) | 9,7 h (at 75% load) |
| Autonomy (soundproof) | 9,7 h (at 75% load) |
| Lube oil at PRP (max.) | 0,10 % |

Electrical system

| | |
|------------------|------------|
| Electric circuit | 24 V |
| Battery (ACP) | 2 x 145 Ah |
| Starting motor | 6,0 kW |

Alternator

| | |
|--------------------|-----------------------|
| Manufacturer | Stamford |
| Model | HCI 544 D |
| Efficiency at ¾ | 94,3 % |
| Power at 27 °C | 575 / 460 kVA/kW |
| Insulation | CLASS H |
| Protection | IP 23 |
| Power factor cos φ | 0,8 |
| Regulator | electr. SX440 +/-1,0% |

| | |
|----------------------------|-------------------------|
| Combustion air flow at PRP | 1920 m ³ /h |
| Cooling air flow rate | 22150 m ³ /h |
| Exhaust gas flow at PRP | 4740 m ³ /h |
| Exhaust gas temp. at LTP | 490 °C |
| Max. exhaust back pressure | 50 mbar |



General data

| | |
|----------------------------|--------------------|
| Dimension (open) | 3500x1300x2170 |
| Dimension (soundproof) | 5000x1800x2250 |
| Weight (open/soundproof) | 3640 / 5600 kg |
| Sound power level (LWA) | 100 dB(A) |
| Sound pressure level at 7m | 75 dB(A) |
| Fuel tank capacity approx. | 730 l (open) |
| Fuel tank capacity approx. | 730 l (soundproof) |

ESE 650 MW ESE 650 MW/AS

ENDRESS  [®]
Wir machen Strom



Genset

| | |
|-----------------------|------------------|
| Prime power [PRP] | 642 / 514 kVA/kW |
| Emergency power [LTP] | 710 / 568 kVA/kW |
| Frequency | 50 Hz |
| Voltage | 400/230 V |

Engine type

| | |
|--------------------------|-----------------------------|
| Manufacturer | MTU |
| Model | 12V2000G23 |
| Prime power [PRP] | 541 kW |
| Emergency power [LTP] | 598 kW |
| Speed | 1500 rpm |
| Cooling system | Water |
| Intake | Turbocharged aftercooled |
| Cylinders | 12 a V |
| Displacement | 23880 cm ³ |
| Standard governor | electronic |
| Lubricating oil capacity | 82 l |
| Coolant capacity | 174 l |

Fuel/Lube consumption

| | |
|----------------------------|-----------------------|
| at 75 % load | 93 l/h |
| at 100 % load | 124 l/h |
| Autonomy (standard tank) | 0,85 h (at 100% load) |
| Autonomy (800 l fuel tank) | 5,50 h (at 100% load) |
| Lube oil at PRP (max.) | 0,50 % |

Electrical system

| | |
|------------------|------|
| Electric circuit | 24 V |
|------------------|------|

Alternator

| | |
|--------------------|-----------------------|
| Manufacturer | Stamford |
| Model | HCI 5F |
| Efficiency at ¾ | 95,2 % |
| Power at 27 °C | 738/568 kVA/kW |
| Insulation | CLASS H |
| Protection | IP 23 |
| Power factor cos φ | 0,8 |
| Regulator | electr. SX440 +/-1,0% |

| | |
|----------------------------|--------------------------|
| Combustion air flow at PRP | 44,4 m ³ /min |
| Cooling air flow rate | 756 m ³ /min |
| Exhaust gas flow at PRP | 126 m ³ /min |
| Exhaust gas temp. at LTP | 545 °C |
| Max. exhaust back pressure | 50 mbar |



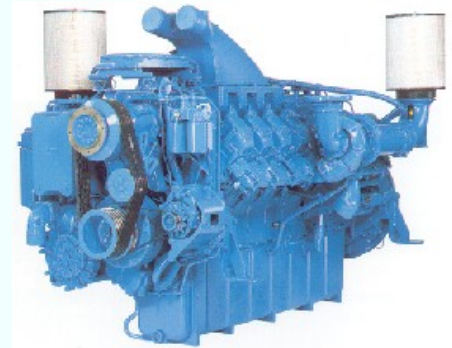
STAMFORD
power generation



General data

| | |
|---|----------------|
| Dimension (open) | 3860x1580x2070 |
| Dimension (soundproof) | 5575x1870x2671 |
| Weight (open/soundproof) | 5758 / 7356 kg |
| Sound pressure level at 7m | 70 dB(A) |
| Fuel tank capacity for open and soundproof version | approx. 120 l |
| Option for fuel tank | 800 l |

ESE 720 MW ESE 720 MW/AS



Genset

| | |
|-----------------------|------------------|
| Prime power [PRP] | 708 / 567 kVA/kW |
| Emergency power [LTP] | 783 / 626 kVA/kW |
| Frequency | 50 Hz |
| Voltage | 400/230 V |

Engine type

| | |
|--------------------------|-----------------------------|
| Manufacturer | MTU |
| Model | 12V2000G63 |
| Prime power [PRP] | 601 kW |
| Emergency power [LTP] | 664 kW |
| Speed | 1500 rpm |
| Cooling system | Water |
| Intake | Turbocharged aftercooled |
| Cylinders | 12 a V |
| Displacement | 23880 cm ³ |
| Standard governor | electronic |
| Lubricating oil capacity | 82 l |
| Coolant capacity | 180 l |

Fuel/Lube consumption

| | |
|----------------------------|-----------------------|
| at 75 % load | 104 l/h |
| at 100 % load | 138 l/h |
| Autonomy (standard tank) | 0,76 h (at 100% load) |
| Autonomy (800 l fuel tank) | 4,92 h (at 100% load) |
| Lube oil at PRP (max.) | 0,50 % |

Electrical system

| | |
|------------------|------|
| Electric circuit | 24 V |
|------------------|------|

Alternator

| | |
|--------------------|-----------------------|
| Manufacturer | Stamford |
| Model | HCI 6G |
| Efficiency at ¾ | 94,4 % |
| Power at 27 °C | 860/664 kVA/kW |
| Insulation | CLASS H |
| Protection | IP 23 |
| Power factor cos φ | 0,8 |
| Regulator | electr. MX321 +/-1,0% |

| | |
|----------------------------|---------------------------|
| Combustion air flow at PRP | 47,4 m ³ /min |
| Cooling air flow rate | 756 m ³ /min |
| Exhaust gas flow at PRP | 132,6 m ³ /min |
| Exhaust gas temp. at LTP | 555 °C |
| Max. exhaust back pressure | 50 mbar |

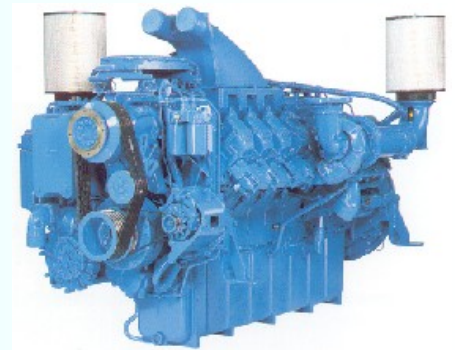
General data

| | |
|---|----------------|
| Dimension (open) | 4067x1580x2070 |
| Dimension (soundproof) | 5575x1870x2671 |
| Weight (open/soundproof) | 6089 / 7667 kg |
| Sound pressure level at 7m | 70 dB(A) |
| Fuel tank capacity for open and soundproof version | approx. 120 l |
| Option for fuel tank | 800 l |

ESE 830 MW

ESE 830 MW/AS

ENDRESS  [®]
Wir machen Strom



STAMFORD
 power generation



Genset

| | |
|-----------------------|------------------|
| Prime power [PRP] | 813 / 651 kVA/kW |
| Emergency power [LTP] | 860 / 688 kVA/kW |
| Frequency | 50 Hz |
| Voltage | 400/230 V |

Engine type

| | |
|--------------------------|-----------------------------|
| Manufacturer | MTU |
| Model | 16V2000G23 |
| Prime power [PRP] | 690 kW |
| Emergency power [LTP] | 762 kW |
| Speed | 1500 rpm |
| Cooling system | Water |
| Intake | Turbocharged aftercooled |
| Cylinders | 16 a V |
| Displacement | 31840 cm ³ |
| Standard governor | electronic |
| Lubricating oil capacity | 110 l |
| Coolant capacity | 210 l |

Fuel/Lube consumption

| | |
|----------------------------|-----------------------|
| at 75 % load | 118 l/h |
| at 100 % load | 157 l/h |
| Autonomy (standard tank) | 0,67 h (at 100% load) |
| Autonomy (800 l fuel tank) | 4,33 h (at 100% load) |
| Lube oil at PRP (max.) | 0,50 % |

Electrical system

| | |
|------------------|------|
| Electric circuit | 24 V |
|------------------|------|

Alternator

| | |
|--------------------|-----------------------|
| Manufacturer | Stamford |
| Model | HCI 6G |
| Efficiency at ¾ | 94,4 % |
| Power at 27 °C | 860/664 kVA/kW |
| Insulation | CLASS H |
| Protection | IP 23 |
| Power factor cos φ | 0,8 |
| Regulator | electr. MX321 +/-1,0% |

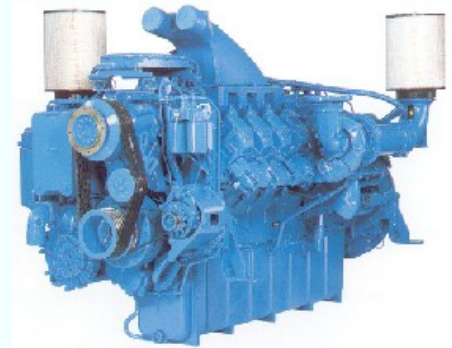
| | |
|----------------------------|---------------------------|
| Combustion air flow at PRP | 55,8 m ³ /min |
| Cooling air flow rate | 846 m ³ /min |
| Exhaust gas flow at PRP | 145,2 m ³ /min |
| Exhaust gas temp. at LTP | 505 °C |
| Max. exhaust back pressure | 50 mbar |

General data

| | |
|---|----------------|
| Dimension (open) | 4398x1752x2210 |
| Dimension (soundproof) | 6550x1900x3200 |
| Weight (open/soundproof) | 6942 / 9810 kg |
| Sound pressure level at 7m | 70 dB(A) |
| Fuel tank capacity for open and soundproof version | approx. 120 l |
| Option for fuel tank | 800 l |

ESE 980 MW ESE 980 MW/AS

ENDRESS 
Wir machen Strom



Genset

| | |
|-----------------------|-------------------|
| Prime power [PRP] | 918 / 735 kVA/kW |
| Emergency power [LTP] | 1010 / 808 kVA/kW |
| Frequency | 50 Hz |
| Voltage | 400/230 V |

Engine type

| | |
|--------------------------|-----------------------------|
| Manufacturer | MTU |
| Model | 16V2000G63 |
| Prime power [PRP] | 775 kW |
| Emergency power [LTP] | 856 kW |
| Speed | 1500 rpm |
| Cooling system | Water |
| Intake | Turbocharged aftercooled |
| Cylinders | 16 a V |
| Displacement | 31840 cm ³ |
| Standard governor | electronic |
| Lubricating oil capacity | 110 l |
| Coolant capacity | 210 l |

Fuel/Lube consumption

| | |
|----------------------------|-----------------------|
| at 75 % load | 134 l/h |
| at 100 % load | 178 l/h |
| Autonomy (standard tank) | 0,59 h (at 100% load) |
| Autonomy (800 l fuel tank) | 3,82 h (at 100% load) |
| Lube oil at PRP (max.) | 0,50 % |

Electrical system

| | |
|------------------|------|
| Electric circuit | 24 V |
|------------------|------|

Alternator

| | |
|--------------------|-----------------------|
| Manufacturer | Stamford |
| Model | HCI 6H |
| Efficiency at ¾ | 95,0 % |
| Power at 27 °C | 1010/784 kVA/kW |
| Insulation | CLASS H |
| Protection | IP 23 |
| Power factor cos φ | 0,8 |
| Regulator | electr. MX321 +/-1,0% |

| | |
|----------------------------|---------------------------|
| Combustion air flow at PRP | 60,6 m ³ /min |
| Cooling air flow rate | 930 m ³ /min |
| Exhaust gas flow at PRP | 154,8 m ³ /min |
| Exhaust gas temp. at LTP | 525 °C |
| Max. exhaust back pressure | 50 mbar |

STAMFORD
power generation



General data

| | |
|---|-----------------|
| Dimension (open) | 4398x1752x2210 |
| Dimension (soundproof) | 6550x1900x3200 |
| Weight (open/soundproof) | 7144 / 10012 kg |
| Sound pressure level at 7m | 70 dB(A) |
| Fuel tank capacity for open and soundproof version | approx. 120 l |
| Option for fuel tank | 800 l |

ESE 1025 MW

ESE 1025 MW/AS

ENDRESS  [®]
Wir machen Strom

Genset

| | |
|-----------------------|-------------------|
| Prime power [PRP] | 1006 / 805 kVA/kW |
| Emergency power [LTP] | 1110 / 888 kVA/kW |
| Frequency | 50 Hz |
| Voltage | 400/230 V |

Engine type

| | |
|--------------------------|-----------------------------|
| Manufacturer | MTU |
| Model | 18V2000G63 |
| Prime power [PRP] | 848 kW |
| Emergency power [LTP] | 938 kW |
| Speed | 1500 rpm |
| Cooling system | Water |
| Intake | Turbocharged aftercooled |
| Cylinders | 18 a V |
| Displacement | 35800 cm ³ |
| Standard governor | electronic |
| Lubricating oil capacity | 130 l |
| Coolant capacity | 230 l |

Fuel/Lube consumption

| | |
|----------------------------|-----------------------|
| at 75 % load | 150 l/h |
| at 100 % load | 200 l/h |
| Autonomy (standard tank) | 0,53 h (at 100% load) |
| Autonomy (800 l fuel tank) | 3,4 h (at 100% load) |
| Lube oil at PRP (max.) | 0,50 % |

Electrical system

| | |
|------------------|------|
| Electric circuit | 24 V |
|------------------|------|

Alternator

| | |
|--------------------|-----------------------|
| Manufacturer | Stamford |
| Model | HCI 6J |
| Efficiency at ¾ | 95,1 % |
| Power at 27 °C | 1110/856 kVA/kW |
| Insulation | CLASS H |
| Protection | IP 23 |
| Power factor cos φ | 0,8 |
| Regulator | electr. MX321 +/-1,0% |

| | |
|----------------------------|--------------------------|
| Combustion air flow at PRP | 66 m ³ /min |
| Cooling air flow rate | 1362 m ³ /min |
| Exhaust gas flow at PRP | 198 m ³ /min |
| Exhaust gas temp. at LTP | 525 °C |
| Max. exhaust back pressure | 50 mbar |



STAMFORD
 power generation



General data

| | |
|---|-----------------|
| Dimension (open) | 4591x1752x2451 |
| Dimension (soundproof) | 7050x2000x3500 |
| Weight (open/soundproof) | 7840 / 10813 kg |
| Sound pressure level at 7m | 70 dB(A) |
| Fuel tank capacity for open and soundproof version | approx. 120 l |
| Option for fuel tank | 800 l |

ESE 1300 MW

ESE 1300 MW/AS

ENDRESS  [®]
Wir machen Strom

Genset

| | |
|-----------------------|--------------------|
| Prime power [PRP] | 1315 / 1052 kVA/kW |
| Emergency power [LTP] | 1350 / 1080 kVA/kW |
| Frequency | 50 Hz |
| Voltage | 400/230 V |

Engine type

| | |
|--------------------------|-----------------------------|
| Manufacturer | MTU |
| Model | 12V4000G21 |
| Prime power [PRP] | 1175 kW |
| Emergency power [LTP] | 1300 kW |
| Speed | 1500 rpm |
| Cooling system | Water |
| Intake | Turbocharged aftercooled |
| Cylinders | 12 a V |
| Displacement | 48700 cm ³ |
| Standard governor | electronic |
| Lubricating oil capacity | 260 l |
| Coolant capacity | 335 l |

Fuel/Lube consumption

| | |
|----------------------------|-----------------------|
| at 75 % load | 194 l/h |
| at 100 % load | 258 l/h |
| Autonomy (standard tank) | 0,41 h (at 100% load) |
| Autonomy (800 l fuel tank) | 2,63 h (at 100% load) |
| Lube oil at PRP (max.) | 0,50 % |

Electrical system

| | |
|------------------|------|
| Electric circuit | 24 V |
|------------------|------|

Alternator

| | |
|--------------------|-----------------------|
| Manufacturer | Stamford |
| Model | PI734A |
| Efficiency at ¾ | 94,8 % |
| Power at 27 °C | 1350/1052 kVA/kW |
| Insulation | CLASS H |
| Protection | IP 23 |
| Power factor cos φ | 0,8 |
| Regulator | electr. MX341 +/-1,0% |

| | |
|----------------------------|--------------------------|
| Combustion air flow at PRP | 90 m ³ /min |
| Cooling air flow rate | 1840 m ³ /min |
| Exhaust gas flow at PRP | 252 m ³ /min |
| Exhaust gas temp. at LTP | 465 °C |
| Max. exhaust back pressure | 50 mbar |



General data

| | |
|---|------------------|
| Dimension (open) | 4890x2000x2448 |
| Dimension (soundproof) | 7550x2200x3550 |
| Weight (open/soundproof) | 12144 / 14289 kg |
| Sound pressure level at 7m | 70 dB(A) |
| Fuel tank capacity for open and soundproof version | approx. 120 l |
| Option for fuel tank | 800 l |

ESE 1560 MW

ESE 1560 MW/AS

ENDRESS 
Wir machen Strom

Genset

| | |
|-----------------------|--------------------|
| Prime power [PRP] | 1554 / 1243 kVA/kW |
| Emergency power [LTP] | 1660 / 1328 kVA/kW |
| Frequency | 50 Hz |
| Voltage | 400/230 V |

Engine type

| | |
|--------------------------|-----------------------------|
| Manufacturer | MTU |
| Model | 12V4000G61 |
| Prime power [PRP] | 1300 kW |
| Emergency power [LTP] | 1435 kW |
| Speed | 1500 rpm |
| Cooling system | Water |
| Intake | Turbocharged aftercooled |
| Cylinders | 12 a V |
| Displacement | 48700 cm ³ |
| Standard governor | electronic |
| Lubricating oil capacity | 260 l |
| Coolant capacity | 335 l |

Fuel/Lube consumption

| | |
|----------------------------|-----------------------|
| at 75 % load | 225 l/h |
| at 100 % load | 300 l/h |
| Autonomy (standard tank) | 0,35 h (at 100% load) |
| Autonomy (800 l fuel tank) | 2,26 h (at 100% load) |
| Lube oil at PRP (max.) | 0,50 % |

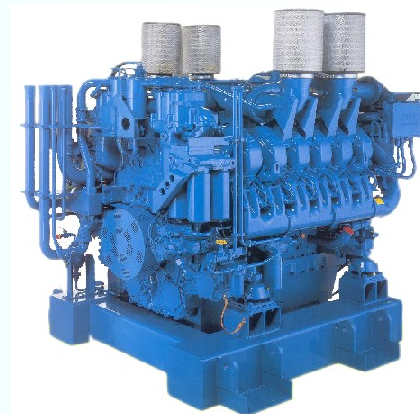
Electrical system

| | |
|------------------|------|
| Electric circuit | 24 V |
|------------------|------|

Alternator

| | |
|--------------------|-----------------------|
| Manufacturer | Stamford |
| Model | PI734C |
| Efficiency at ¾ | 95,7 % |
| Power at 27 °C | 1660/1292 kVA/kW |
| Insulation | CLASS H |
| Protection | IP 23 |
| Power factor cos φ | 0,8 |
| Regulator | electr. MX341 +/-1,0% |

| | |
|----------------------------|--------------------------|
| Combustion air flow at PRP | 96 m ³ /min |
| Cooling air flow rate | 1840 m ³ /min |
| Exhaust gas flow at PRP | 282 m ³ /min |
| Exhaust gas temp. at LTP | 460 °C |
| Max. exhaust back pressure | 50 mbar |



STAMFORD
 power generation



General data

| | |
|---|------------------|
| Dimension (open) | 4890x2000x2448 |
| Dimension (soundproof) | 7550x2200x3550 |
| Weight (open/soundproof) | 12422 / 14567 kg |
| Sound pressure level at 7m | 70 dB(A) |
| Fuel tank capacity for open and soundproof version | approx. 120 l |
| Option for fuel tank | 800 l |

ESE 1880 MW

ESE 1880 MW/AS

ENDRESS 
Wir machen Strom

Genset

Prime power [PRP] 1886 / 1509 kVA/kW
 Emergency power [LTP] 2035 / 1628 kVA/kW
 Frequency 50 Hz
 Voltage 400/230 V

Engine type

Manufacturer MTU
 Model 16V4000G21
 Prime power [PRP] 1570 kW
 Emergency power [LTP] 1730 kW
 Speed 1500 rpm
 Cooling system Water
 Intake Turbocharged aftercooled
 Cylinders 16 a V
 Displacement 65000 cm³
 Standard governor electronic
 Lubricating oil capacity 290 l
 Coolant capacity 430 l

Fuel/Lube consumption

at 75 % load 273 l/h
 at 100 % load 364 l/h
 Autonomy (standard tank) 0,29 h (at 100% load)
 Autonomy (800 l fuel tankf) 1,87 h (at 100% load)
 Lube oil at PRP (max.) 0,50 %

Electrical system

Electric circuit 24 V

Alternator

Manufacturer Stamford
 Model PI734E
 Efficiency at ¾ 96,2 %
 Power at 27 °C 2035/1584 kVA/kW
 Insulation CLASS H
 Protection IP 23
 Power factor cos φ 0,8
 Regulator electr. MX341 +/-1,0%

Combustion air flow at PRP 120 m³/min
 Cooling air flow rate 2120 m³/min
 Exhaust gas flow at PRP 294 m³/min
 Exhaust gas temp. at LTP 480 °C
 Max. exhaust back pressure 50 mbar



STAMFORD
 power generation



General data

Dimension (open) 5677x2286x2790
 Dimension (soundproof) 8550x2500x3900
 Weight (open/soundproof) 15615 / 17880 kg
 Sound pressure level at 7m 70 dB(A)
 Fuel tank capacity for open and soundproof version approx. 120 l
 Option for fuel tank 800 l

ESE 2090 MW

ESE 2090 MW/AS

ENDRESS 
Wir machen Strom

Genset

Prime power [PRP] 2082 / 1367 kVA/kW
 Emergency power [LTP] 2230 / 1784 kVA/kW
 Frequency 50 Hz
 Voltage 400/230 V

Engine type

Manufacturer MTU
 Model 16V4000G61
 Prime power [PRP] 1730 kW
 Emergency power [LTP] 1910 kW
 Speed 1500 rpm
 Cooling system Water
 Intake Turbocharged aftercooled
 Cylinders 16 a V
 Displacement 65000 cm³
 Standard governor electronic
 Lubricating oil capacity 290 l
 Coolant capacity 430 l

Fuel/Lube consumption

at 75 % load 301 l/h
 at 100 % load 402 l/h
 Autonomy (standard tank) 0,26 h (at 100% load)
 Autonomy (800 l fuel tank) 1,69 h (at 100% load)
 Lube oil at PRP (max.) 0,50 %

Electrical system

Electric circuit 24 V

Alternator

Manufacturer Stamford
 Model PI734F
 Efficiency at ¾ 96,4 %
 Power at 27 °C 2230/1736 kVA/kW
 Insulation CLASS H
 Protection IP 23
 Power factor cos φ 0,8
 Regulator electr. MX341 +/-1,0%

Combustion air flow at PRP 120 m³/min
 Cooling air flow rate 2120 m³/min
 Exhaust gas flow at PRP 312 m³/min
 Exhaust gas temp. at LTP 480 °C
 Max. exhaust back pressure 50 mbar



STAMFORD
 power generation



General data

Dimension (open) 5762x2286x2790
 Dimension (soundproof) 8550x2500x3900
 Weight (open/soundproof) 15899 / 18164 kg
 Sound pressure level at 7m 70 dB(A)
 Fuel tank capacity for open and soundproof version approx. 120 l
 Option for fuel tank 800 l

ESE 2600 MW

ESE 2600 MW/AS

ENDRESS  [®]
Wir machen Strom

Genset

Prime power [PRP] 2588 / 2070 kVA/kW
 Emergency power [LTP] 2700 / 2160 kVA/kW
 Frequency 50 Hz
 Voltage 400/230 V

Engine type

Manufacturer MTU
 Model 20V4000G22
 Prime power [PRP] 2170 kW
 Emergency power [LTP] 2390 kW
 Speed 1500 rpm
 Cooling system Water
 Intake Turbocharged aftercooled
 Cylinders 20 a V
 Displacement 89810 cm³
 Standard governor electronic
 Lubricating oil capacity 390 l
 Coolant capacity ----- l

Fuel/Lube consumption

at 75 % load 367 l/h
 at 100 % load 489 l/h
 Autonomy (standard tank) 0,21 h (at 100% load)
 Autonomy (800 l fuel tank) 1,39 h (at 100% load)
 Lube oil at PRP (max.) 0,50 %

Electrical system

Electric circuit 24 V

Alternator

Manufacturer Mecc Alte
 Model ECO 46 2L/4
 Efficiency at ¾ 97 %
 Power at 27 °C 2700/2070 kVA/kW
 Insulation CLASS H
 Protection IP 23
 Power factor cos φ 0,8
 Regulator electr. UVR6

Combustion air flow at PRP 162 m³/min
 Cooling air flow rate 1392 m³/min
 Exhaust gas flow at PRP 420 m³/min
 Exhaust gas temp. at LTP 490 °C
 Max. exhaust back pressure 50 mbar



General data

Dimension (open) 11380x2500x4500
 Dimension (soundproof) 8550x2500x3900
 Weight (open/soundproof) 18000 / 22300 kg
 Sound pressure level at 7m 70 dB(A)
 Fuel tank capacity for open and soundproof version approx. 120 l
 Option for fuel tank 800 l

ESE 655 PW

ESE 655 PW/AS

ENDRESS 
Wir machen Strom

Genset

| | |
|-----------------------|------------------|
| Prime power [PRP] | 642 / 514 kVA/kW |
| Emergency power [LTP] | 710 / 568 kVA/kW |
| Frequency | 50 Hz |
| Voltage | 400/230 V |

Engine type

| | |
|--------------------------|-----------------------------|
| Manufacturer | Perkins |
| Model | 2806C-E18 TAG2 |
| Prime power [PRP] | 542 kW |
| Emergency power [LTP] | 599 kW |
| Speed | 1500 rpm |
| Cooling system | Water |
| Intake | Turbocharged aftercooled |
| Cylinders | 6 in line |
| Displacement | 22921 cm ³ |
| Standard governor | electronic |
| Lubricating oil capacity | 113 l |
| Coolant capacity | 105 l |

Fuel/Lube consumption

| | |
|----------------------------|-----------------------|
| at 75 % load | 113 l/h |
| at 100 % load | 151 l/h |
| Autonomy (standard tank) | 0,69 h (at 100% load) |
| Autonomy (800 l fuel tank) | 4,49 h (at 100% load) |
| Lube oil at PRP (max.) | 0,50 % |

Electrical system

| | |
|------------------|------|
| Electric circuit | 24 V |
|------------------|------|

Alternator

| | |
|--------------------|----------------|
| Manufacturer | Stamford |
| Model | HCI5F |
| Efficiency at ¾ | 95,0% |
| Power at 27 °C | 738/568 kVA/kW |
| Insulation | CLASS H |
| Protection | IP 23 |
| Power factor cos φ | 0,8 |
| Regulator | electr. SX 440 |

| | |
|----------------------------|-------------------------|
| Combustion air flow at PRP | 42 m ³ /min |
| Cooling air flow rate | 702 m ³ /min |
| Exhaust gas flow at PRP | 109 m ³ /min |
| Exhaust gas temp. at LTP | 563 °C |
| Max. exhaust back pressure | 69 mbar |

 **Perkins**



STAMFORD
 power generation



General data

| | |
|---|----------------|
| Dimension (open) | 3391x1536x2050 |
| Dimension (soundproof) | 5075x1870x2650 |
| Weight (open/soundproof) | 4860 / 6410 kg |
| Sound pressure level at 7m | 70 dB(A) |
| Fuel tank capacity for open and soundproof version | approx. 120 l |
| Option for fuel tank | 800 l |

ESE 740 PW

ESE 740 PW/AS

ENDRESS 
Wir machen Strom

Genset

| | |
|-----------------------|------------------|
| Prime power [PRP] | 731 / 585 kVA/kW |
| Emergency power [LTP] | 807 / 646 kVA/kW |
| Frequency | 50 Hz |
| Voltage | 400/230 V |

Engine type

| | |
|--------------------------|-----------------------------|
| Manufacturer | Perkins |
| Model | 4006C-23 TAG2A |
| Prime power [PRP] | 620 kW |
| Emergency power [LTP] | 685 kW |
| Speed | 1500 rpm |
| Cooling system | Water |
| Intake | Turbocharged aftercooled |
| Cylinders | 6 in line |
| Displacement | 22921 cm ³ |
| Standard governor | electronic |
| Lubricating oil capacity | 113 l |
| Coolant capacity | 105 l |

Fuel/Lube consumption

| | |
|----------------------------|-----------------------|
| at 75 % load | 113 l/h |
| at 100 % load | 151 l/h |
| Autonomy (standard tank) | 0,69 h (at 100% load) |
| Autonomy (800 l fuel tank) | 4,49 h (at 100% load) |
| Lube oil at PRP (max.) | 0,50 % |

Electrical system

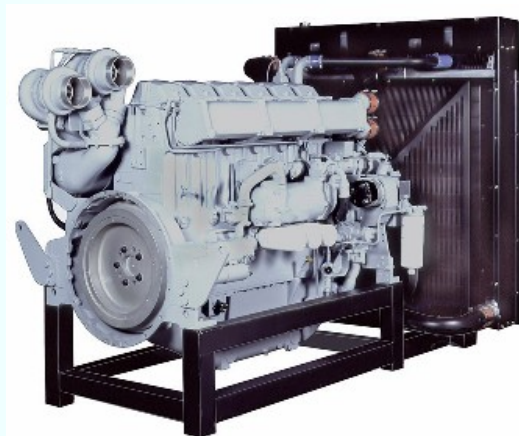
| | |
|------------------|------|
| Electric circuit | 24 V |
|------------------|------|

Alternator

| | |
|--------------------|----------------|
| Manufacturer | Stamford |
| Model | HCI6G |
| Efficiency at ¾ | 94,4 % |
| Power at 27 °C | 860/664 kVA/kW |
| Insulation | CLASS H |
| Protection | IP 23 |
| Power factor cos φ | 0,8 |
| Regulator | electr. MX 321 |

| | |
|----------------------------|--------------------------|
| Combustion air flow at PRP | 60 m ³ /min |
| Cooling air flow rate | 1200 m ³ /min |
| Exhaust gas flow at PRP | 180 m ³ /min |
| Exhaust gas temp. at LTP | 430 °C |
| Max. exhaust back pressure | 60 mbar |

 **Perkins**



STAMFORD
 power generation



General data

| | |
|---|----------------|
| Dimension (open) | 3960x1706x2131 |
| Dimension (soundproof) | 6550x2000x3450 |
| Weight (open/soundproof) | 6193 / 8456 kg |
| Sound pressure level at 7m | 70 dB(A) |
| Fuel tank capacity for open and soundproof version | approx. 120 l |
| Option for fuel tank | 800 l |

ESE 800 PW

ESE 800 PW/AS

ENDRESS 
Wir machen Strom

Genset

| | |
|-----------------------|------------------|
| Prime power [PRP] | 800 / 640 kVA/kW |
| Emergency power [LTP] | 860 / 688 kVA/kW |
| Frequency | 50 Hz |
| Voltage | 400/230 V |

Engine type

| | |
|--------------------------|-----------------------------|
| Manufacturer | Perkins |
| Model | 4006C-23 TAG3A |
| Prime power [PRP] | 679 kW |
| Emergency power [LTP] | 760 kW |
| Speed | 1500 rpm |
| Cooling system | Water |
| Intake | Turbocharged aftercooled |
| Cylinders | 6 in line |
| Displacement | 22921 cm ³ |
| Standard governor | electronic |
| Lubricating oil capacity | 113 l |
| Coolant capacity | 105 l |

Fuel/Lube consumption

| | |
|----------------------------|-----------------------|
| at 75 % load | 124 l/h |
| at 100 % load | 166 l/h |
| Autonomy (standard tank) | 0,63 h (at 100% load) |
| Autonomy (800 l fuel tank) | 4,10 h (at 100% load) |
| Lube oil at PRP (max.) | 0,50 % |

Electrical system

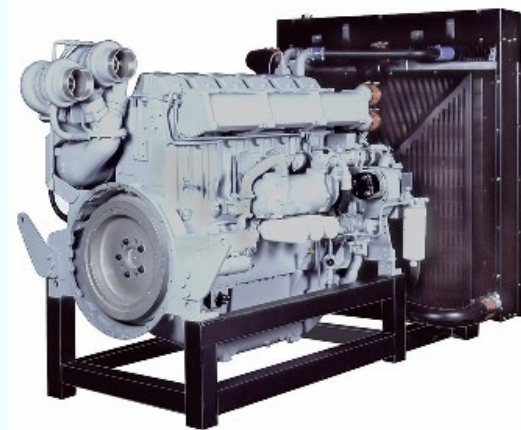
| | |
|------------------|------|
| Electric circuit | 24 V |
|------------------|------|

Alternator

| | |
|--------------------|----------------|
| Manufacturer | Stamford |
| Model | HCI6G |
| Efficiency at ¾ | 94,4 % |
| Power at 27 °C | 860/664 kVA/kW |
| Insulation | CLASS H |
| Protection | IP 23 |
| Power factor cos φ | 0,8 |
| Regulator | electr. MX 321 |

| | |
|----------------------------|--------------------------|
| Combustion air flow at PRP | 69 m ³ /min |
| Cooling air flow rate | 1200 m ³ /min |
| Exhaust gas flow at PRP | 193 m ³ /min |
| Exhaust gas temp. at LTP | 500 °C |
| Max. exhaust back pressure | 60 mbar |

 **Perkins**



STAMFORD
 power generation



General data

| | |
|---|----------------|
| Dimension (open) | 3960x1706x2131 |
| Dimension (soundproof) | 6550x2000x3450 |
| Weight (open/soundproof) | 6203 / 8456 kg |
| Sound pressure level at 7m | 70 dB(A) |
| Fuel tank capacity for open and soundproof version | approx. 120 l |
| Option for fuel tank | 800 l |

ESE 975 PW ESE 975 PW/AS

ENDRESS 
Wir machen Strom

 **Perkins**

Genset

| | |
|-----------------------|-------------------|
| Prime power [PRP] | 980 / 784 kVA/kW |
| Emergency power [LTP] | 1010 / 808 kVA/kW |
| Frequency | 50 Hz |
| Voltage | 400/230 V |

Engine type

| | |
|--------------------------|-----------------------------|
| Manufacturer | Perkins |
| Model | 4008TAG2A |
| Prime power [PRP] | 861 kW |
| Emergency power [LTP] | 947 kW |
| Speed | 1500 rpm |
| Cooling system | Water |
| Intake | Turbocharged aftercooled |
| Cylinders | 8 in line |
| Displacement | 30561 cm ³ |
| Standard governor | electronic |
| Lubricating oil capacity | 153 l |
| Coolant capacity | 162 l |

Fuel/Lube consumption

| | |
|----------------------------|-----------------------|
| at 75 % load | 158 l/h |
| at 100 % load | 211 l/h |
| Autonomy (standard tank) | 0,50 h (at 100% load) |
| Autonomy (800 l fuel tank) | 3,23 h (at 100% load) |
| Lube oil at PRP (max.) | 0,24 % |

Electrical system

| | |
|------------------|------|
| Electric circuit | 24 V |
|------------------|------|

Alternator

| | |
|--------------------|-------------------|
| Manufacturer | Stamford |
| Model | HCI6H |
| Efficiency at ¾ | 95,0 % |
| Power at 27 °C | 1010 / 784 kVA/kW |
| Insulation | CLASS H |
| Protection | IP 23 |
| Power factor cos φ | 0,8 |
| Regulator | electr. MX 321 |

| | |
|----------------------------|--------------------------|
| Combustion air flow at PRP | 75 m ³ /min |
| Cooling air flow rate | 1200 m ³ /min |
| Exhaust gas flow at PRP | 200 m ³ /min |
| Exhaust gas temp. at LTP | 500 °C |
| Max. exhaust back pressure | 81,6 mbar |



STAMFORD
power generation



General data

| | |
|---|----------------|
| Dimension (open) | 4830x1868x2494 |
| Dimension (soundproof) | 7260x2100x3500 |
| Weight (open/soundproof) | 8004 / 9873 kg |
| Sound pressure level at 7m | 70 dB(A) |
| Fuel tank capacity for open and soundproof version | approx. 120 l |
| Option for fuel tank | 800 l |

ESE 1020 PW

ESE 1020 PW/AS

ENDRESS  [®]
Wir machen Strom

Genset

| | |
|-----------------------|-------------------|
| Prime power [PRP] | 1021 / 817 kVA/kW |
| Emergency power [LTP] | 1110 / 888 kVA/kW |
| Frequency | 50 Hz |
| Voltage | 400/230 V |

Engine type

| | |
|--------------------------|-----------------------------|
| Manufacturer | Perkins |
| Model | 4008TAG2A |
| Prime power [PRP] | 861 kW |
| Emergency power [LTP] | 947 kW |
| Speed | 1500 rpm |
| Cooling system | Water |
| Intake | Turbocharged aftercooled |
| Cylinders | 8 in line |
| Displacement | 30561 cm ³ |
| Standard governor | electronic |
| Lubricating oil capacity | 153 l |
| Coolant capacity | 162 l |

Fuel/Lube consumption

| | |
|----------------------------|-----------------------|
| at 75 % load | 165 l/h |
| at 100 % load | 219 l/h |
| Autonomy (standard tank) | 0,48 h (at 100% load) |
| Autonomy (800 l fuel tank) | 3,10 h (at 100% load) |
| Lube oil at PRP (max.) | 0,24 % |

Electrical system

| | |
|------------------|------|
| Electric circuit | 24 V |
|------------------|------|

Alternator

| | |
|--------------------|-------------------|
| Manufacturer | Stamford |
| Model | HCI6J |
| Efficiency at ¾ | 95,1 % |
| Power at 27 °C | 1010 / 784 kVA/kW |
| Insulation | CLASS H |
| Protection | IP 23 |
| Power factor cos φ | 0,8 |
| Regulator | electr. MX 321 |

| | |
|----------------------------|--------------------------|
| Combustion air flow at PRP | 75 m ³ /min |
| Cooling air flow rate | 1200 m ³ /min |
| Exhaust gas flow at PRP | 200 m ³ /min |
| Exhaust gas temp. at LTP | 465 °C |
| Max. exhaust back pressure | 81,6 mbar |

 **Perkins**



STAMFORD
 power generation



General data

| | |
|---|-----------------|
| Dimension (open) | 4830x1868x2494 |
| Dimension (soundproof) | 7260x2100x3500 |
| Weight (open/soundproof) | 8166 / 10105 kg |
| Sound pressure level at 7m | 70 dB(A) |
| Fuel tank capacity for open and soundproof version | approx. 120 l |
| Option for fuel tank | 800 l |

ESE 1250 PW

ESE 1250 PW/AS

ENDRESS 
Wir machen Strom

Genset

| | |
|-----------------------|--------------------|
| Prime power [PRP] | 1235 / 988 kVA/kW |
| Emergency power [LTP] | 1350 / 1080 kVA/kW |
| Frequency | 50 Hz |
| Voltage | 400/230 V |

Engine type

| | |
|--------------------------|-----------------------------|
| Manufacturer | Perkins |
| Model | 4012TWG2 |
| Prime power [PRP] | 1044 kW |
| Emergency power [LTP] | 1154 kW |
| Speed | 1500 rpm |
| Cooling system | Water |
| Intake | Turbocharged aftercooled |
| Cylinders | 12 a V |
| Displacement | 45842 cm ³ |
| Standard governor | electronic |
| Lubricating oil capacity | 178 l |
| Coolant capacity | 210 l |

Fuel/Lube consumption

| | |
|----------------------------|-----------------------|
| at 75 % load | 191 l/h |
| at 100 % load | 255 l/h |
| Autonomy (standard tank) | 0,41 h (at 100% load) |
| Autonomy (800 l fuel tank) | 2,67 h (at 100% load) |
| Lube oil at PRP (max.) | 0,28 % |

Electrical system

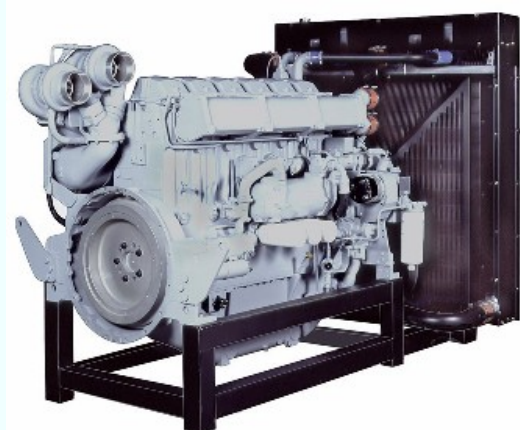
| | |
|------------------|------|
| Electric circuit | 24 V |
|------------------|------|

Alternator

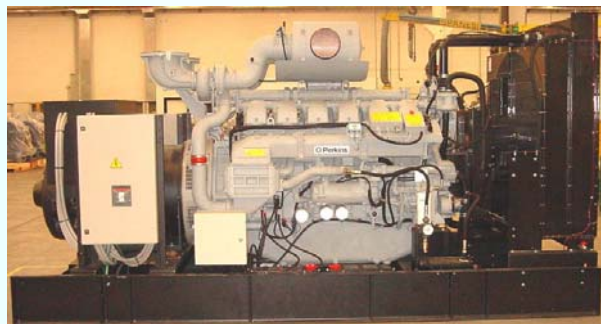
| | |
|--------------------|--------------------|
| Manufacturer | Stamford |
| Model | PI734A |
| Efficiency at ¾ | 94,8 % |
| Power at 27 °C | 1350 / 1052 kVA/kW |
| Insulation | CLASS H |
| Protection | IP 23 |
| Power factor cos φ | 0,8 |
| Regulator | electr. MX 341 |

| | |
|----------------------------|--------------------------|
| Combustion air flow at PRP | 91 m ³ /min |
| Cooling air flow rate | 1626 m ³ /min |
| Exhaust gas flow at PRP | 245 m ³ /min |
| Exhaust gas temp. at LTP | 460 °C |
| Max. exhaust back pressure | 93,09 mbar |

 **Perkins**



STAMFORD
 power generation



General data

| | |
|---|------------------|
| Dimension (open) | 4852x1868x2686 |
| Dimension (soundproof) | 7410x2100x3700 |
| Weight (open/soundproof) | 10284 / 12150 kg |
| Sound pressure level at 7m | 70 dB(A) |
| Fuel tank capacity for open and soundproof version | approx. 120 l |
| Option for fuel tank | 800 l |

ESE 1320 PW

ESE 1320 PW/AS

ENDRESS  [®]
Wir machen Strom

Genset

| | |
|-----------------------|--------------------|
| Prime power [PRP] | 1315 / 1052 kVA/kW |
| Emergency power [LTP] | 1350 / 1080 kVA/kW |
| Frequency | 50 Hz |
| Voltage | 400/230 V |

Engine type

| | |
|--------------------------|-----------------------------|
| Manufacturer | Perkins |
| Model | 4012TAG1A |
| Prime power [PRP] | 1136 kW |
| Emergency power [LTP] | 1250 kW |
| Speed | 1500 rpm |
| Cooling system | Water |
| Intake | Turbocharged aftercooled |
| Cylinders | 12 a V |
| Displacement | 45842 cm ³ |
| Standard governor | electronic |
| Lubricating oil capacity | 178 l |
| Coolant capacity | 235 l |

Fuel/Lube consumption

| | |
|----------------------------|-----------------------|
| at 75 % load | 198 l/h |
| at 100 % load | 263 l/h |
| Autonomy (standard tank) | 0,40 h (at 100% load) |
| Autonomy (800 l fuel tank) | 2,58 h (at 100% load) |
| Lube oil at PRP (max.) | 0,33 % |

Electrical system

| | |
|------------------|------|
| Electric circuit | 24 V |
|------------------|------|

Alternator

| | |
|--------------------|--------------------|
| Manufacturer | Stamford |
| Model | PI734A |
| Efficiency at ¾ | 94,8 % |
| Power at 27 °C | 1350 / 1052 kVA/kW |
| Insulation | CLASS H |
| Protection | IP 23 |
| Power factor cos φ | 0,8 |
| Regulator | electr. MX 341 |

| | |
|----------------------------|--------------------------|
| Combustion air flow at PRP | 95 m ³ /min |
| Cooling air flow rate | 1872 m ³ /min |
| Exhaust gas flow at PRP | 257 m ³ /min |
| Exhaust gas temp. at LTP | 470 °C |
| Max. exhaust back pressure | 93 mbar |

 **Perkins**



STAMFORD
 power generation



General data

| | |
|---|------------------|
| Dimension (open) | 4962x2265x3046 |
| Dimension (soundproof) | 7410x2500x4050 |
| Weight (open/soundproof) | 11019 / 13260 kg |
| Sound pressure level at 7m | 70 dB(A) |
| Fuel tank capacity for open and soundproof version | approx. 120 l |
| Option for fuel tank | 800 l |

ESE 1500 PW

ESE 1500 PW/AS

ENDRESS 
Wir machen Strom

Genset

| | |
|-----------------------|--------------------|
| Prime power [PRP] | 1499 / 1199 kVA/kW |
| Emergency power [LTP] | 1649 / 1319 kVA/kW |
| Frequency | 50 Hz |
| Voltage | 400/230 V |

Engine type

| | |
|--------------------------|-----------------------------|
| Manufacturer | Perkins |
| Model | 4012TAG2A |
| Prime power [PRP] | 1254 kW |
| Emergency power [LTP] | 1380 kW |
| Speed | 1500 rpm |
| Cooling system | Water |
| Intake | Turbocharged aftercooled |
| Cylinders | 12 a V |
| Displacement | 45842 cm ³ |
| Standard governor | electronic |
| Lubricating oil capacity | 178 l |
| Coolant capacity | 235 l |

Fuel/Lube consumption

| | |
|----------------------------|-----------------------|
| at 75 % load | 225 l/h |
| at 100 % load | 300 l/h |
| Autonomy (standard tank) | 0,35 h (at 100% load) |
| Autonomy (800 l fuel tank) | 2,27 h (at 100% load) |
| Lube oil at PRP (max.) | 0,32 % |

Electrical system

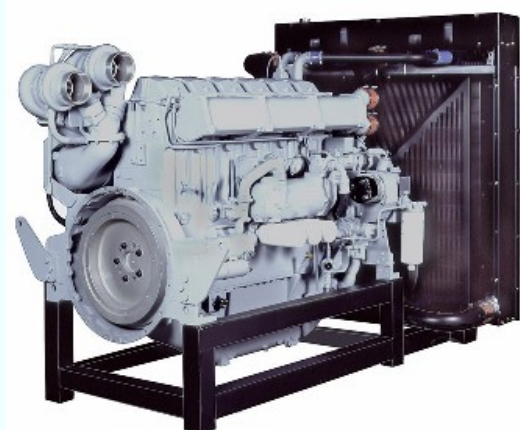
| | |
|------------------|------|
| Electric circuit | 24 V |
|------------------|------|

Alternator

| | |
|--------------------|--------------------|
| Manufacturer | Stamford |
| Model | PI734C |
| Efficiency at ¾ | 95,7 % |
| Power at 27 °C | 1660 / 1292 kVA/kW |
| Insulation | CLASS H |
| Protection | IP 23 |
| Power factor cos φ | 0,8 |
| Regulator | electr. MX 341 |

| | |
|----------------------------|--------------------------|
| Combustion air flow at PRP | 106 m ³ /min |
| Cooling air flow rate | 1872 m ³ /min |
| Exhaust gas flow at PRP | 285 m ³ /min |
| Exhaust gas temp. at LTP | 483 °C |
| Max. exhaust back pressure | 60 mbar |

 **Perkins**



STAMFORD
 power generation



General data

| | |
|---|------------------|
| Dimension (open) | 4962x2265x3046 |
| Dimension (soundproof) | 7410x2500x4050 |
| Weight (open/soundproof) | 11317 / 13558 kg |
| Sound pressure level at 7m | 70 dB(A) |
| Fuel tank capacity for open and soundproof version | approx. 120 l |
| Option for fuel tank | 800 l |

ESE 1700 PW

ESE 1700 PW/AS

ENDRESS 
Wir machen Strom

Genset

| | |
|-----------------------|--------------------|
| Prime power [PRP] | 1689 / 1351 kVA/kW |
| Emergency power [LTP] | 1770 / 1416 kVA/kW |
| Frequency | 50 Hz |
| Voltage | 400/230 V |

Engine type

| | |
|--------------------------|-----------------------------|
| Manufacturer | Perkins |
| Model | 4016TWG2 |
| Prime power [PRP] | 1406 kW |
| Emergency power [LTP] | 1550 kW |
| Speed | 1500 rpm |
| Cooling system | Water |
| Intake | Turbocharged aftercooled |
| Cylinders | 16 a V |
| Displacement | 61123 cm ³ |
| Standard governor | electronic |
| Lubricating oil capacity | 237 l |
| Coolant capacity | 295 l |

Fuel/Lube consumption

| | |
|----------------------------|-----------------------|
| at 75 % load | 261 l/h |
| at 100 % load | 348 l/h |
| Autonomy (standard tank) | 0,30 h (at 100% load) |
| Autonomy (800 l fuel tank) | 1,95 h (at 100% load) |
| Lube oil at PRP (max.) | 0,32 % |

Electrical system

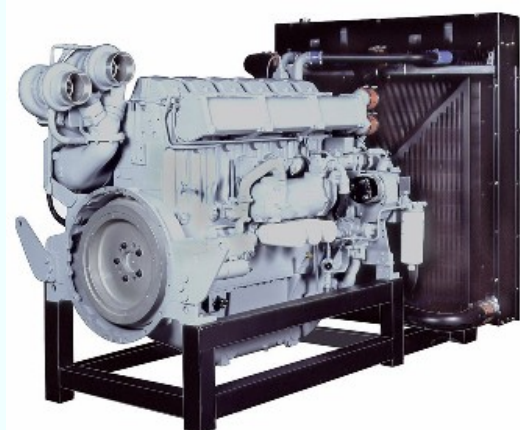
| | |
|------------------|------|
| Electric circuit | 24 V |
|------------------|------|

Alternator

| | |
|--------------------|--------------------|
| Manufacturer | Stamford |
| Model | PI734D |
| Efficiency at ¾ | 96,2 % |
| Power at 27 °C | 1770 / 1376 kVA/kW |
| Insulation | CLASS H |
| Protection | IP 23 |
| Power factor cos φ | 0,8 |
| Regulator | electr. MX 341 |

| | |
|----------------------------|--------------------------|
| Combustion air flow at PRP | 114 m ³ /min |
| Cooling air flow rate | 2130 m ³ /min |
| Exhaust gas flow at PRP | 340 m ³ /min |
| Exhaust gas temp. at LTP | 495 °C |
| Max. exhaust back pressure | 64 mbar |

 **Perkins**



STAMFORD
 power generation



General data

| | |
|---|------------------|
| Dimension (open) | 5620x2150x2720 |
| Dimension (soundproof) | 7980x2130x3800 |
| Weight (open/soundproof) | 14136 / 16450 kg |
| Sound pressure level at 7m | 70 dB(A) |
| Fuel tank capacity for open and soundproof version | approx. 120 l |
| Option for fuel tank | 800 l |

ESE 1850 PW

ESE 1850 PW/AS

ENDRESS  [®]
Wir machen Strom

Genset

| | |
|-----------------------|--------------------|
| Prime power [PRP] | 1846 / 1477 kVA/kW |
| Emergency power [LTP] | 2030 / 1624 kVA/kW |
| Frequency | 50 Hz |
| Voltage | 400/230 V |

Engine type

| | |
|--------------------------|-----------------------------|
| Manufacturer | Perkins |
| Model | 4016TAG1A |
| Prime power [PRP] | 1537 kW |
| Emergency power [LTP] | 1690 kW |
| Speed | 1500 rpm |
| Cooling system | Water |
| Intake | Turbocharged aftercooled |
| Cylinders | 16 a V |
| Displacement | 61123 cm ³ |
| Standard governor | electronic |
| Lubricating oil capacity | 237 l |
| Coolant capacity | 316 l |

Fuel/Lube consumption

| | |
|----------------------------|-----------------------|
| at 75 % load | 281 l/h |
| at 100 % load | 375 l/h |
| Autonomy (standard tank) | 0,28 h (at 100% load) |
| Autonomy (800 l fuel tank) | 1,81 h (at 100% load) |
| Lube oil at PRP (max.) | 0,31 % |

Electrical system

| | |
|------------------|------|
| Electric circuit | 24 V |
|------------------|------|

Alternator

| | |
|--------------------|--------------------|
| Manufacturer | Stamford |
| Model | PI734E |
| Efficiency at ¾ | 96,2 % |
| Power at 27 °C | 2035 / 1584 kVA/kW |
| Insulation | CLASS H |
| Protection | IP 23 |
| Power factor cos φ | 0,8 |
| Regulator | electr. MX 341 |

| | |
|----------------------------|--------------------------|
| Combustion air flow at PRP | 140 m ³ /min |
| Cooling air flow rate | 2394 m ³ /min |
| Exhaust gas flow at PRP | 343 m ³ /min |
| Exhaust gas temp. at LTP | 495 °C |
| Max. exhaust back pressure | 93 mbar |

 **Perkins**



STAMFORD
 power generation



General data

| | |
|---|------------------|
| Dimension (open) | 5620x2775x3516 |
| Dimension (soundproof) | 8970x3000x3820 |
| Weight (open/soundproof) | 14588 / 17750 kg |
| Sound pressure level at 7m | 70 dB(A) |
| Fuel tank capacity for open and soundproof version | approx. 120 l |
| Option for fuel tank | 800 l |

ESE 750 DW

ESE 750 DW/AS

ENDRESS  [®]
Wir machen Strom



Genset

| | |
|-----------------------|------------------|
| Prime power [PRP] | 751 / 601 kVA/kW |
| Emergency power [LTP] | 846 / 677 kVA/kW |
| Frequency | 50 Hz |
| Voltage | 400/230 V |

Engine type

| | |
|--------------------------|-----------------------------|
| Manufacturer | Deutz |
| Model | TBD616V12-G3 |
| Prime power [PRP] | 637 kW |
| Emergency power [LTP] | 718 kW |
| Speed | 1500 rpm |
| Cooling system | Water |
| Intake | Turbocharged aftercooled |
| Cylinders | 12 a V |
| Displacement | 26275 cm ³ |
| Standard governor | electronic |
| Lubricating oil capacity | 64 l |
| Coolant capacity | 192 l |

Fuel/Lube consumption

| | |
|----------------------------|-----------------------|
| at 75 % load | 109 l/h |
| at 100 % load | 145 l/h |
| Autonomy (standard tank) | 0,72 h (at 100% load) |
| Autonomy (800 l fuel tank) | 4,69 h (at 100% load) |
| Lube oil at PRP (max.) | 0,50 % |

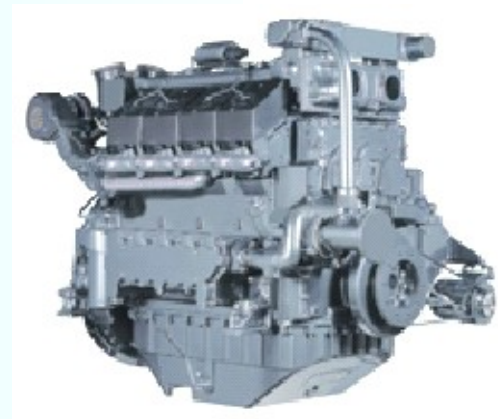
Electrical system

| | |
|------------------|------|
| Electric circuit | 24 V |
|------------------|------|

Alternator

| | |
|--------------------|-------------------|
| Manufacturer | Stamford |
| Model | HCI6J |
| Efficiency at ¾ | 95,1 % |
| Power at 27 °C | 1110 / 856 kVA/kW |
| Insulation | CLASS H |
| Protection | IP 23 |
| Power factor cos φ | 0,8 |
| Regulator | electr. MX 321 |

| | |
|----------------------------|---------------------------|
| Combustion air flow at PRP | 63,8 m ³ /min |
| Cooling air flow rate | 810 m ³ /min |
| Exhaust gas flow at PRP | 165,8 m ³ /min |
| Exhaust gas temp. at LTP | 560 °C |
| Max. exhaust back pressure | 35 mbar |



STAMFORD
 power generation



General data

| | |
|---|-----------------|
| Dimension (open) | 4525x2032x2327 |
| Dimension (soundproof) | 7050x2200x3300 |
| Weight (open/soundproof) | 7364 / 10221 kg |
| Sound pressure level at 7m | 70 dB(A) |
| Fuel tank capacity for open and soundproof version | approx. 120 l |
| Option for fuel tank | 800 l |

ESE 1010 DW

ESE 1010 DW/AS

ENDRESS 
Wir machen Strom

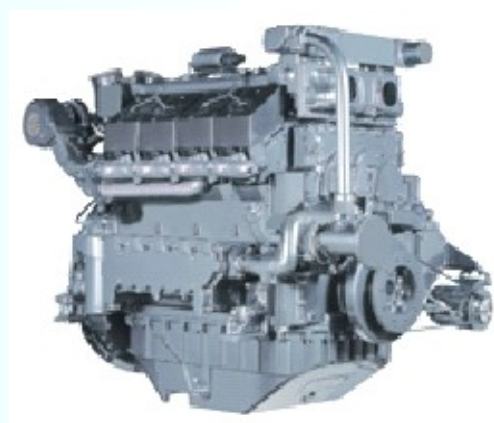


Genset

| | |
|-----------------------|-------------------|
| Prime power [PRP] | 1009 / 808 kVA/kW |
| Emergency power [LTP] | 1110 / 888 kVA/kW |
| Frequency | 50 Hz |
| Voltage | 400/230 V |

Engine type

| | |
|--------------------------|-----------------------------|
| Manufacturer | Deutz |
| Model | TBD616V16-G2 |
| Prime power [PRP] | 851 kW |
| Emergency power [LTP] | 939 kW |
| Speed | 1500 rpm |
| Cooling system | Water |
| Intake | Turbocharged aftercooled |
| Cylinders | 16 a V |
| Displacement | 35033 cm ³ |
| Standard governor | electronic |
| Lubricating oil capacity | 85 l |
| Coolant capacity | 235 l |



Fuel/Lube consumption

| | |
|----------------------------|-----------------------|
| at 75 % load | 153 l/h |
| at 100 % load | 204 l/h |
| Autonomy (standard tank) | 0,52 h (at 100% load) |
| Autonomy (800 l fuel tank) | 3,34 h (at 100% load) |
| Lube oil at PRP (max.) | 0,50 % |

Electrical system

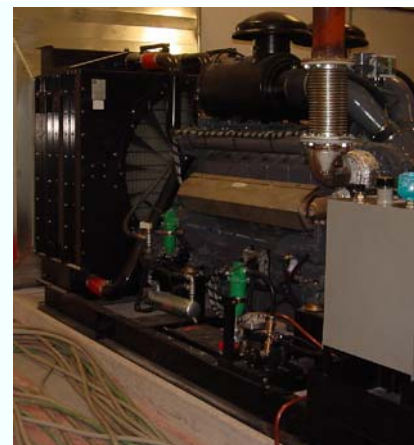
| | |
|------------------|------|
| Electric circuit | 24 V |
|------------------|------|

Alternator

| | |
|--------------------|------------------|
| Manufacturer | Stamford |
| Model | HCI6G |
| Efficiency at ¾ | 94,4 % |
| Power at 27 °C | 860 / 664 kVA/kW |
| Insulation | CLASS H |
| Protection | IP 23 |
| Power factor cos φ | 0,8 |
| Regulator | electr. MX 321 |

| | |
|----------------------------|--------------------------|
| Combustion air flow at PRP | 54,4 m ³ /min |
| Cooling air flow rate | 780 m ³ /min |
| Exhaust gas flow at PRP | 132 m ³ /min |
| Exhaust gas temp. at LTP | 585 °C |
| Max. exhaust back pressure | 35 mbar |

STAMFORD
 power generation



General data

| | |
|---|----------------|
| Dimension (open) | 4174x1750x2180 |
| Dimension (soundproof) | 6550x2000x3200 |
| Weight (open/soundproof) | 6188 / 7805 kg |
| Sound pressure level at 7m | 70 dB(A) |
| Fuel tank capacity for open and soundproof version | approx. 120 l |
| Option for fuel tank | 800 l |